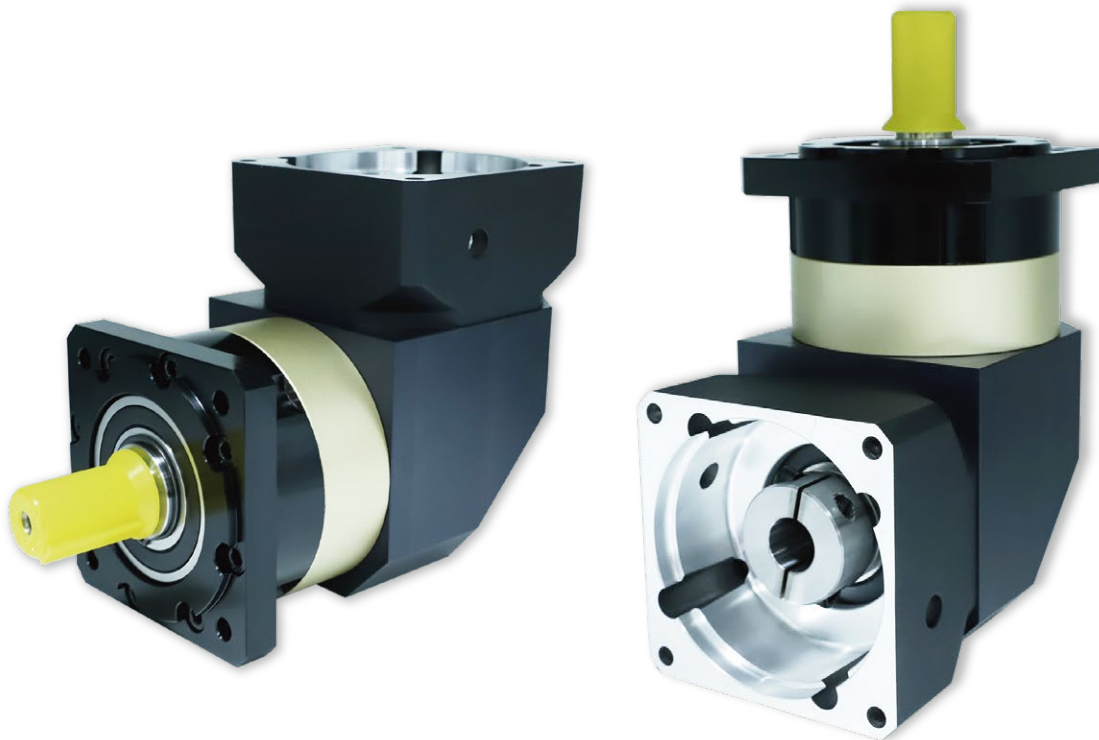


PRODUCT SERIES

HIGH PRECISION PLANETARY REDUCER

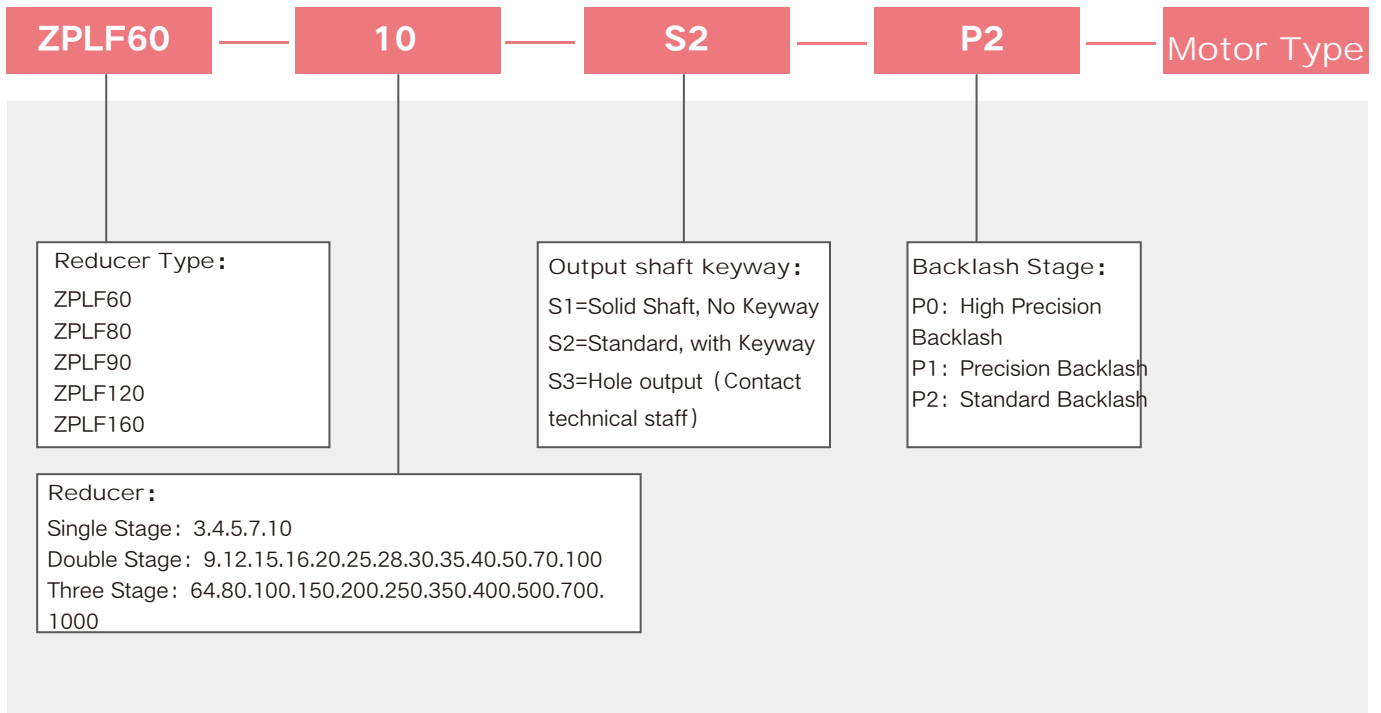
ZPLF Spur Gear Series



⚙️ ZPLF Spur Gear Series Features

- ⊗ 1. Adopt spur gear transmission, after carburizing and quenching treatment, tooth to tooth wide practice treatment, surface sandblasting and nickel plating, stable operation of equipment, low noise.
- ⊗ 2. Simple structure, fast delivery time, mass production.
- ⊗ 3. There are a variety of reducer, which can meet most of the working conditions in the market.

INDICATION OF MODEL NUMBERS ZPLF SERIES

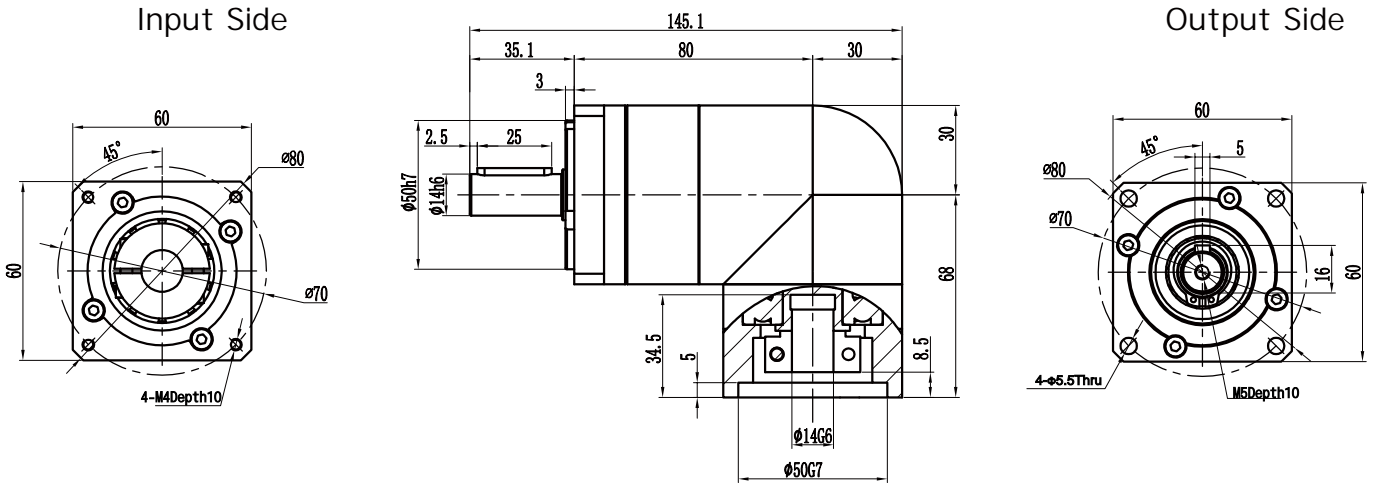


Reducer Rotation Inertia Gauge Table

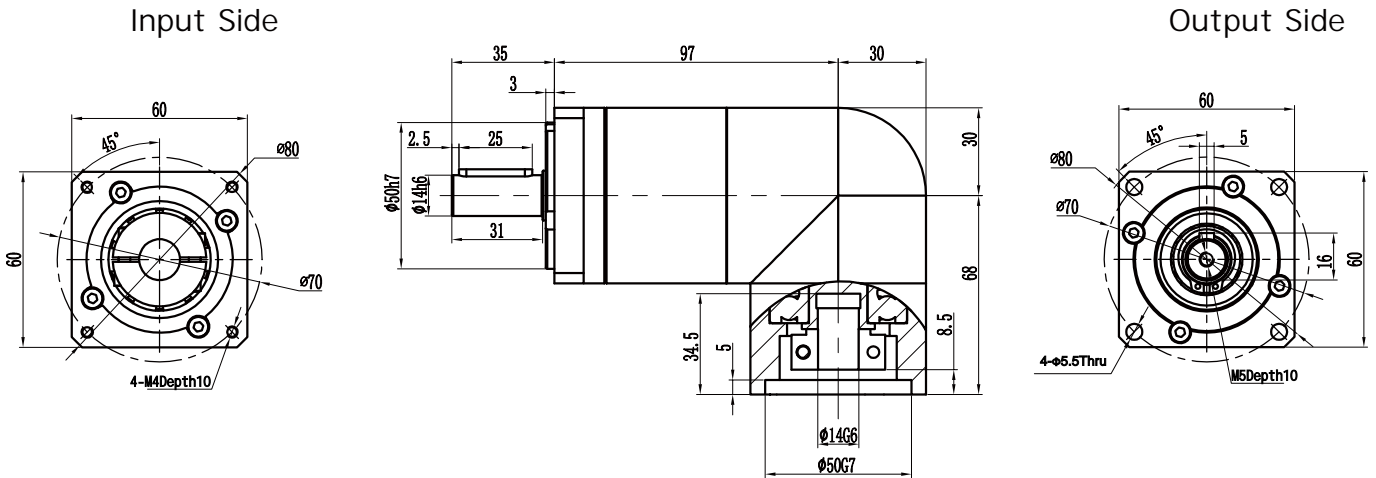
Specification	Unit	Stage	Ratio	ZPLF60	ZPLF80/90	ZPLF120	ZPLF160
Rotational inertia meter	kg/cm ²	1	3	0.064	0.77	2.63	12.14
			4	0.064	0.77	2.63	12.14
			5	0.064	0.77	2.63	12.14
			7	0.064	0.77	2.63	12.14
			8		0.77	2.63	12.14
		10	0.064	0.77	2.63	12.14	
		2	12-40	0.064	0.50	2.63	12.14
			50-100	0.064	0.50	2.63	12.14

ZPLF Series Performance Table								
Specification	Unit	Stage	Ratio	ZPLF60	ZPLF80	ZPLF90	ZPLF120	ZPLF160
Rated output torque T_{2N}	Nm	1	4	42	142	142	280	585
			5	42	142	142	280	585
			7	33	92	92	198	378
			10	15	54	54	95	310
		2	16	42	142	142	280	585
			20	42	142	142	280	585
			25	42	142	142	280	585
			35	42	142	142	280	585
			40	42	142	142	280	585
			50	42	142	142	280	585
			70	33	92	92	198	378
			100	15	54	54	95	310
		3	64	42	142	142	280	585
			80	42	142	142	280	585
			100	42	142	142	280	585
			125	42	142	142	280	585
			140	42	142	142	280	585
			175	42	142	142	280	585
			245	42	142	142	280	585
			350	42	142	142	280	585
400	42		142	142	280	585		
500	42		142	142	280	585		
700	33	92	92	198	378			
1000	15	54	54	95	310			
Max torque T_{2NOT}	Nm		Double rated output torque					
Max radial force F_{2aB}	N		680	1750	1750	3100	6550	
Max axial force F_{2aB}			340	875	875	1550	3275	
Efficiency	%		1	98				
			2	96				
			3	94				
Weight	kg		2.1	5.0	5.0	8.8	26.4	
			2.7	6.0	6.0	10.8	28	
			3.3	7.0	7.0	12.8	33	

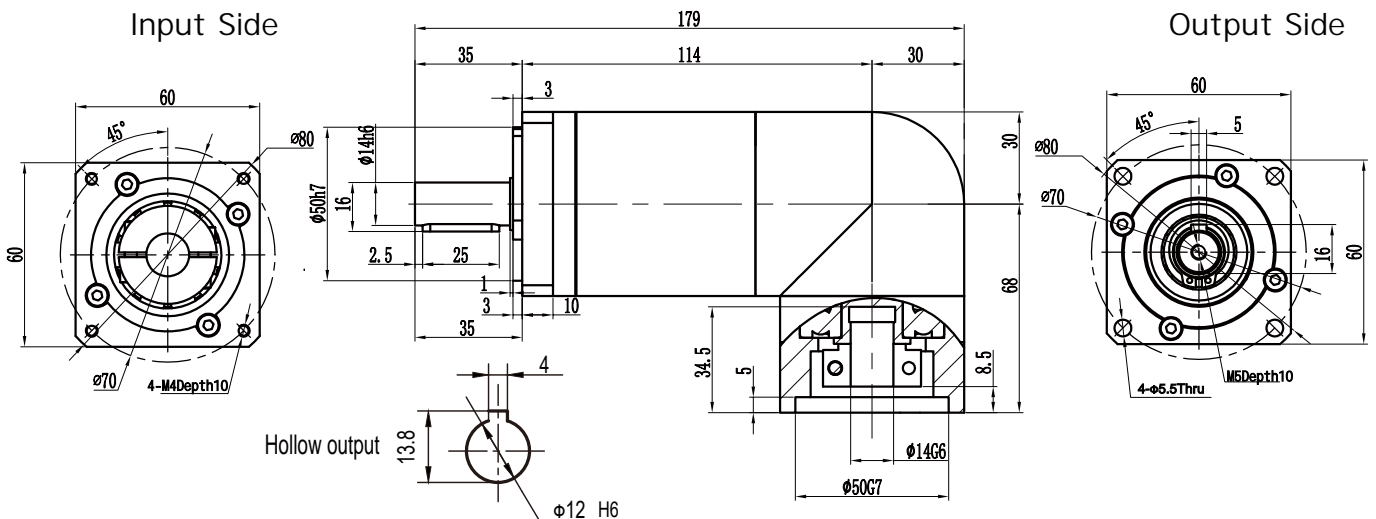
● ZPLF60 One Stage Outline Diagram



● ZPLF60 Two Stage Outline Diagram



● ZPLF60 Three Stage Outline Diagram

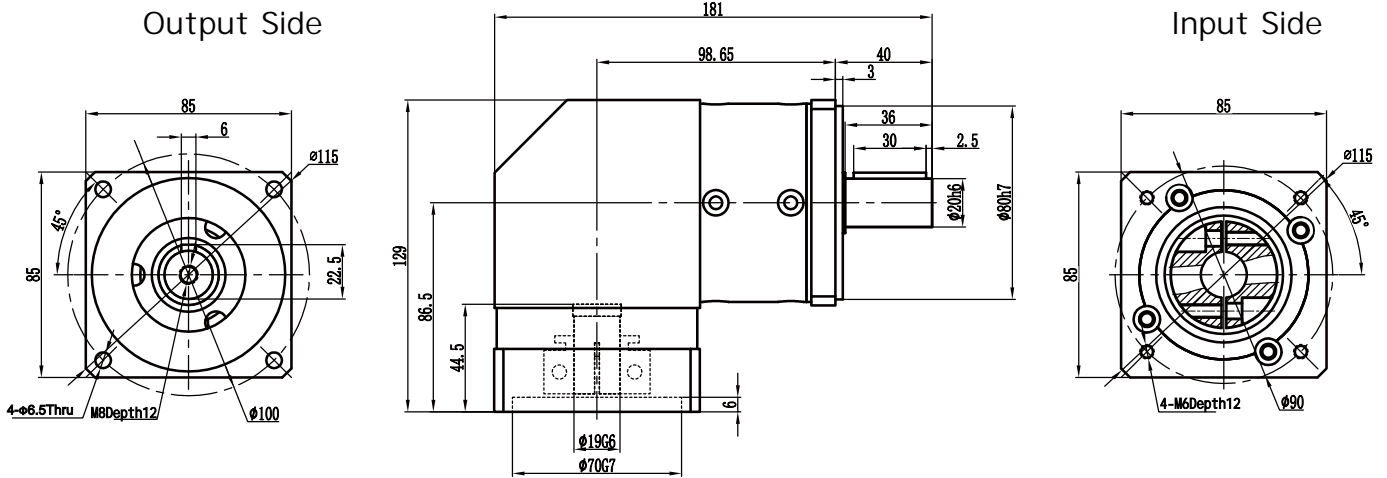


Note: The above drawings are for reference only, the specific is subject to the motor diagram, and the output can be in hollow form and can be customized non-standard.

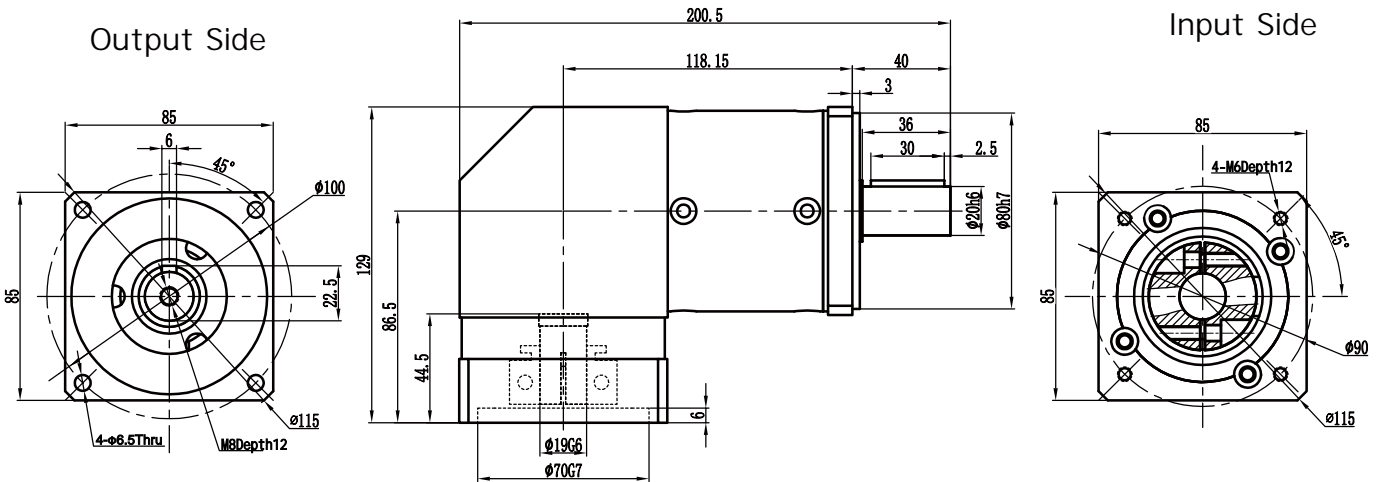
ZPLF80 Outline Diagram

19-70-90-M6接口

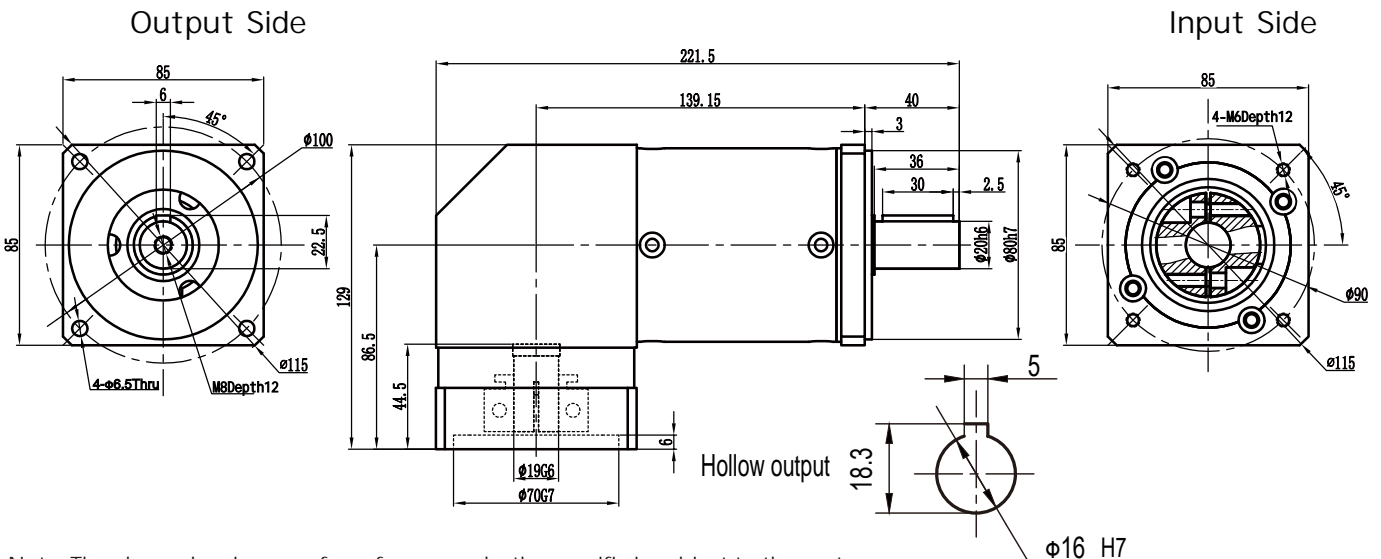
ZPLF80 One Stage Outline Diagram



ZPLF80 Two Stage Outline Diagram

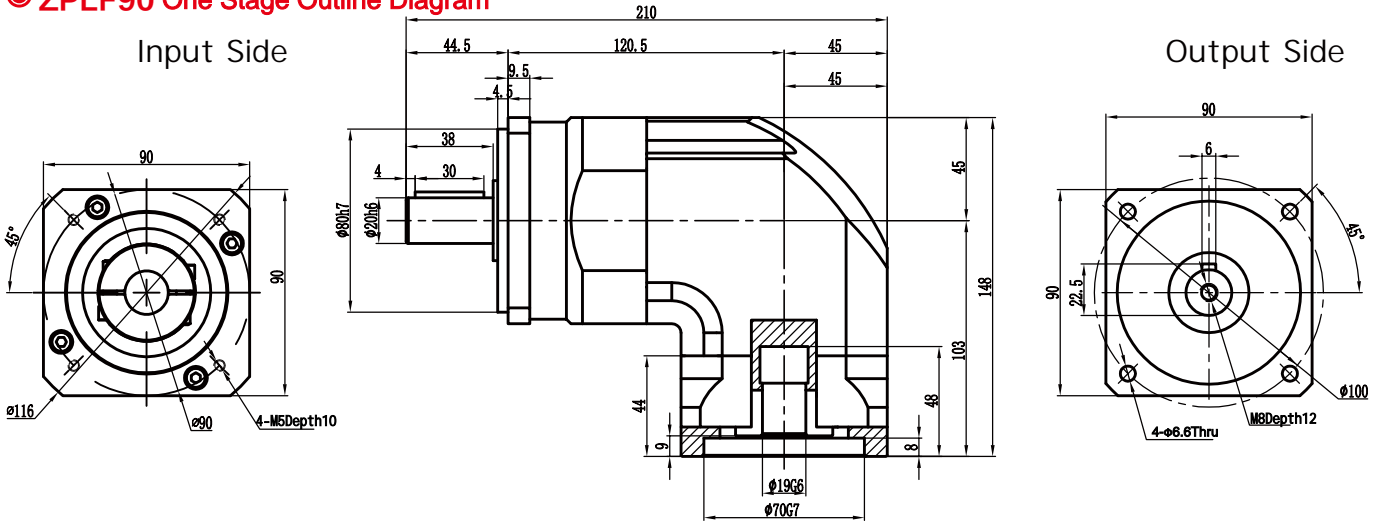


ZPLF80 Three Stage Outline Diagram

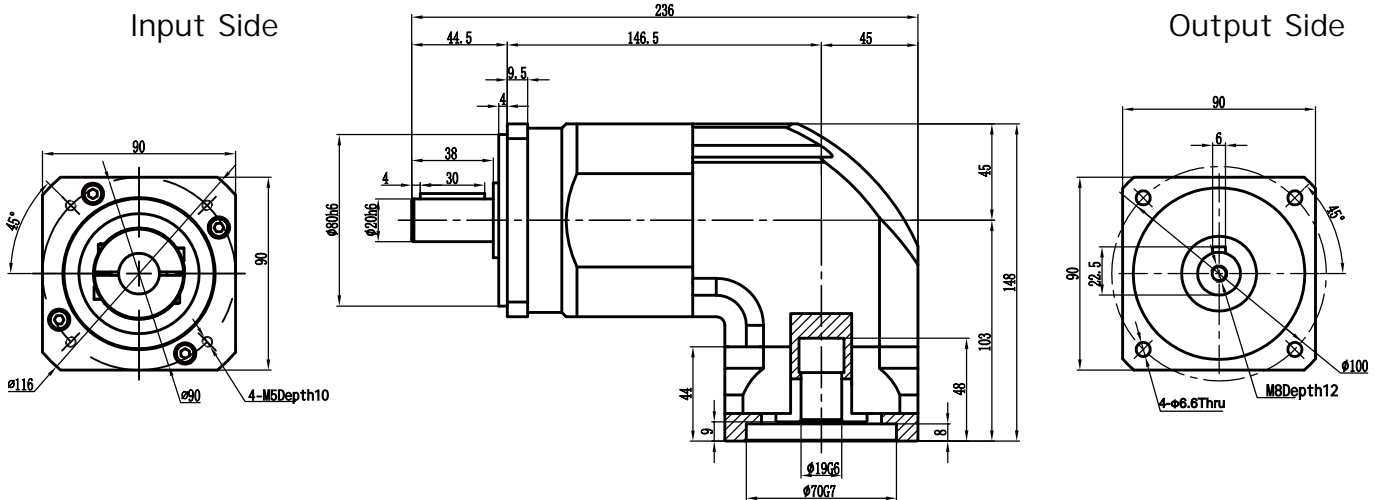


Note: The above drawings are for reference only, the specific is subject to the motor diagram, and the output can be in hollow form and can be customized non-standard.

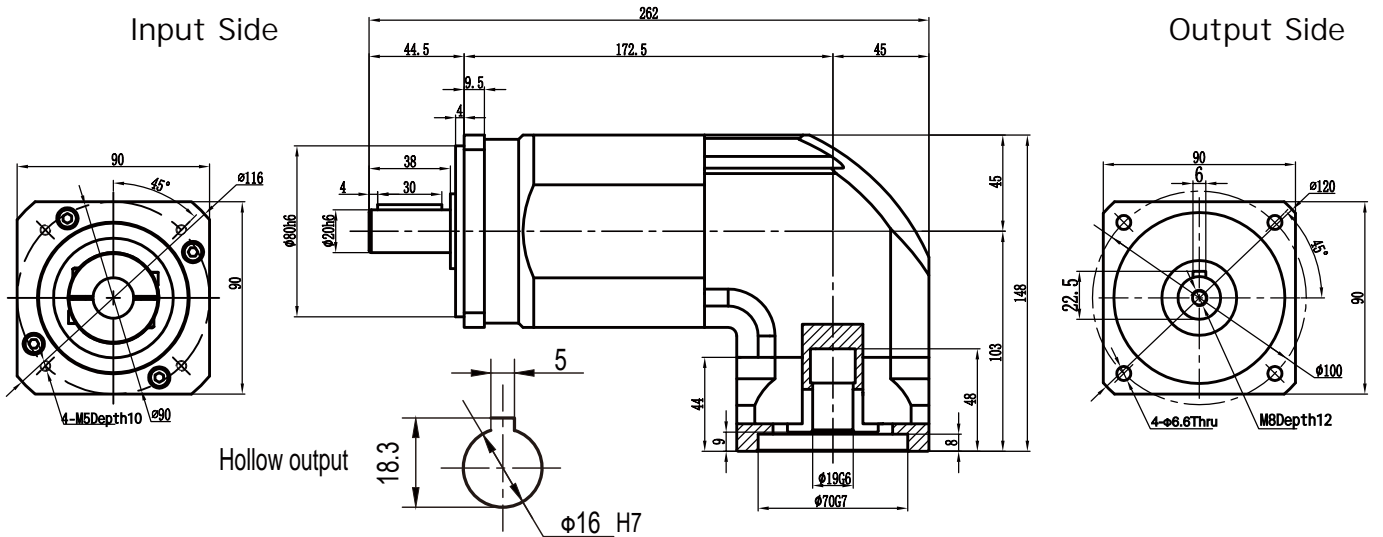
● ZPLF90 One Stage Outline Diagram



● ZPLF90 Two Stage Outline Diagram



● ZPLF90 Three Stage Outline Diagram

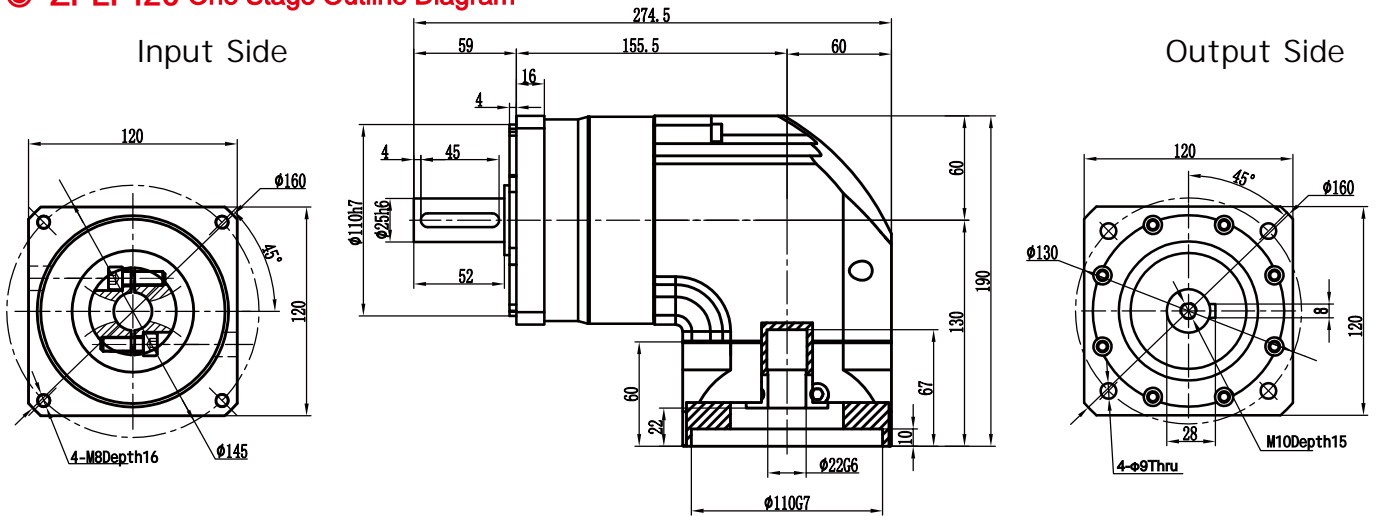


Note: The above drawings are for reference only, the specific is subject to the motor diagram, and the output can be in hollow form and can be customized non-standard.

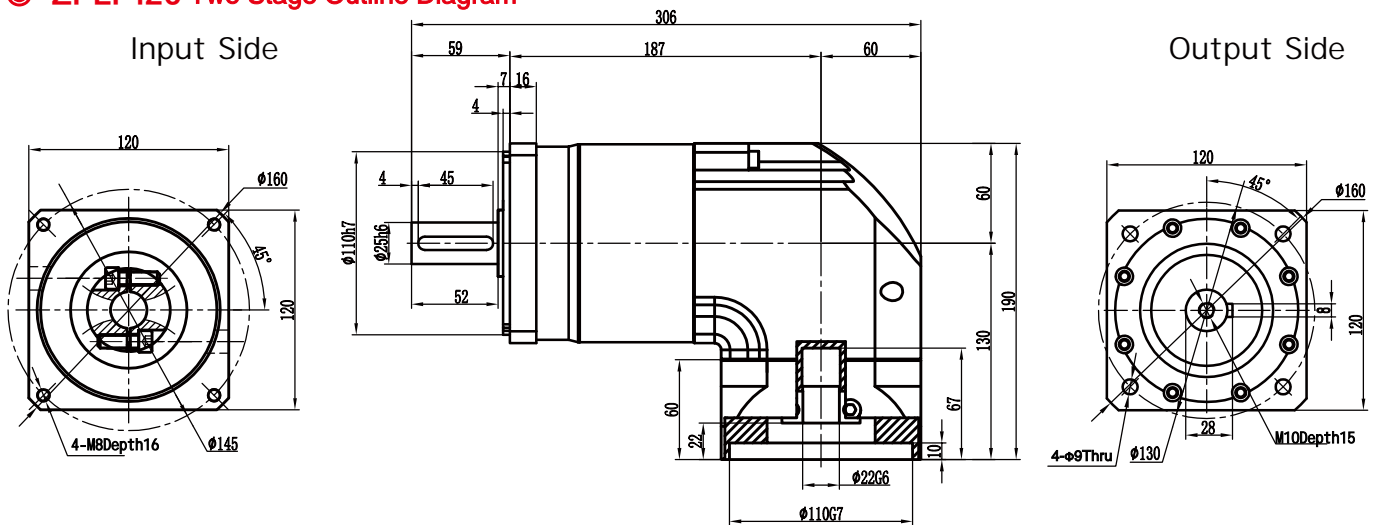
ZPLF120 Outline Diagram

22-110-145-M8接口

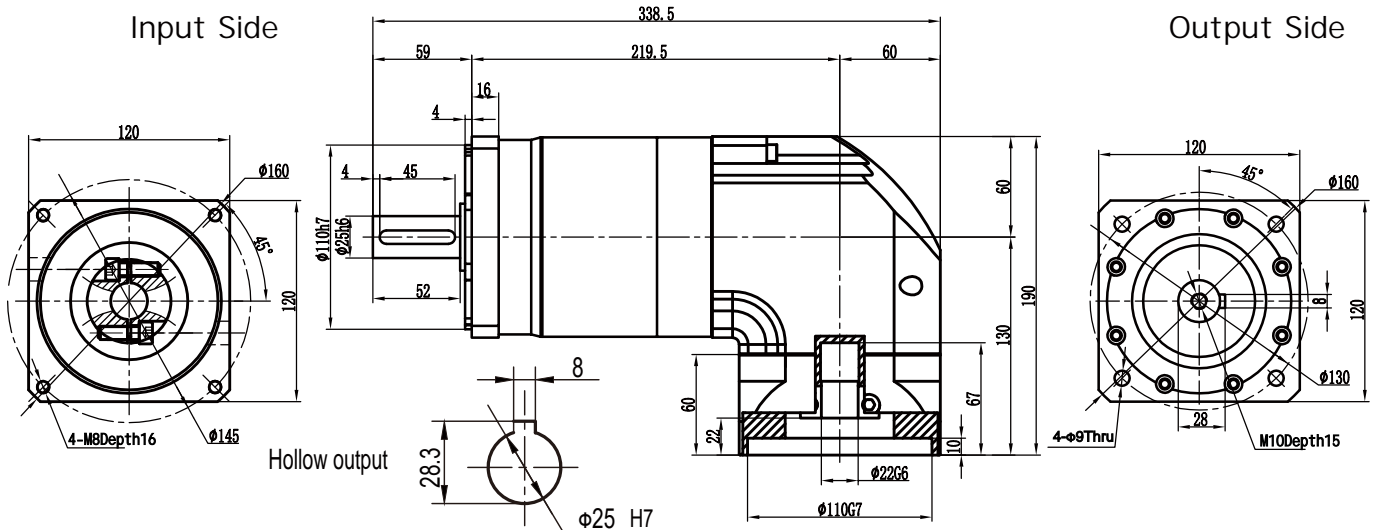
ZPLF120 One Stage Outline Diagram



ZPLF120 Two Stage Outline Diagram

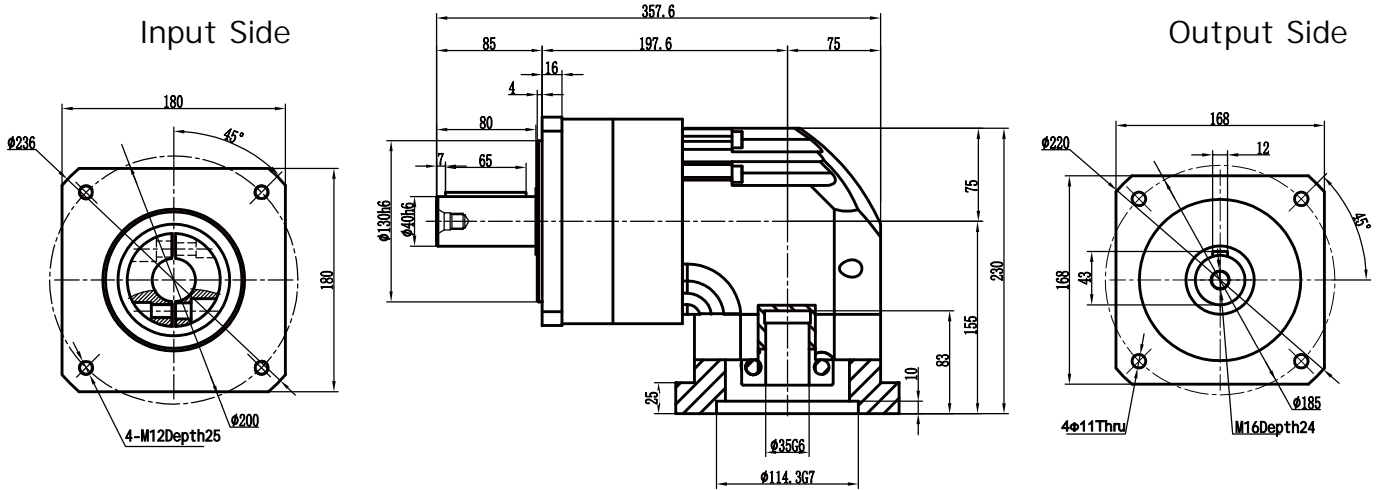


ZPLF120 Three Stage Outline Diagram

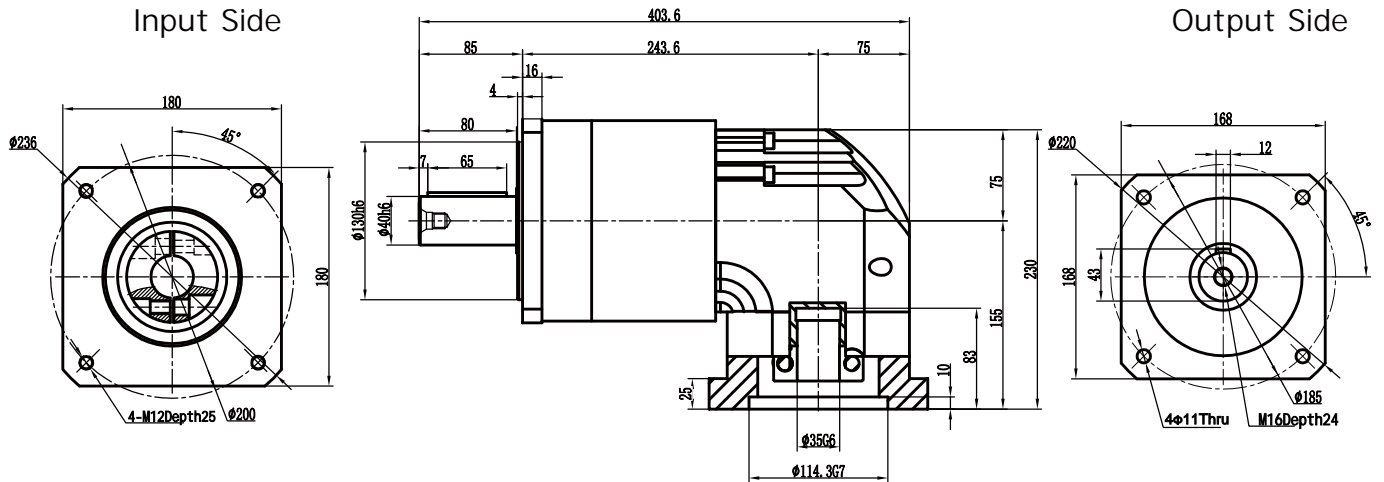


Note: The above drawings are for reference only, the specific is subject to the motor diagram, and the output can be in hollow form and can be customized non-standard.

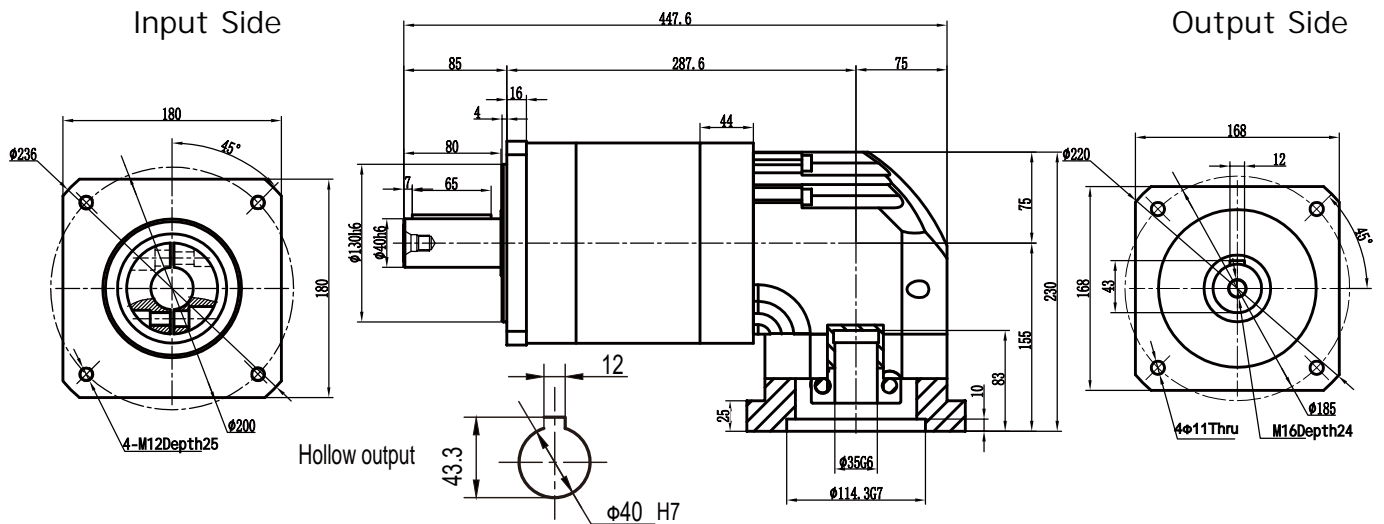
☉ ZPLF160 One Stage Outline Diagram



☉ ZPLF160 Two Stage Outline Diagram



☉ ZPLF160 Three Stage Outline Diagram



Note: The above drawings are for reference only, the specific is subject to the motor diagram, and the output can be in hollow form and can be customized non-standard.