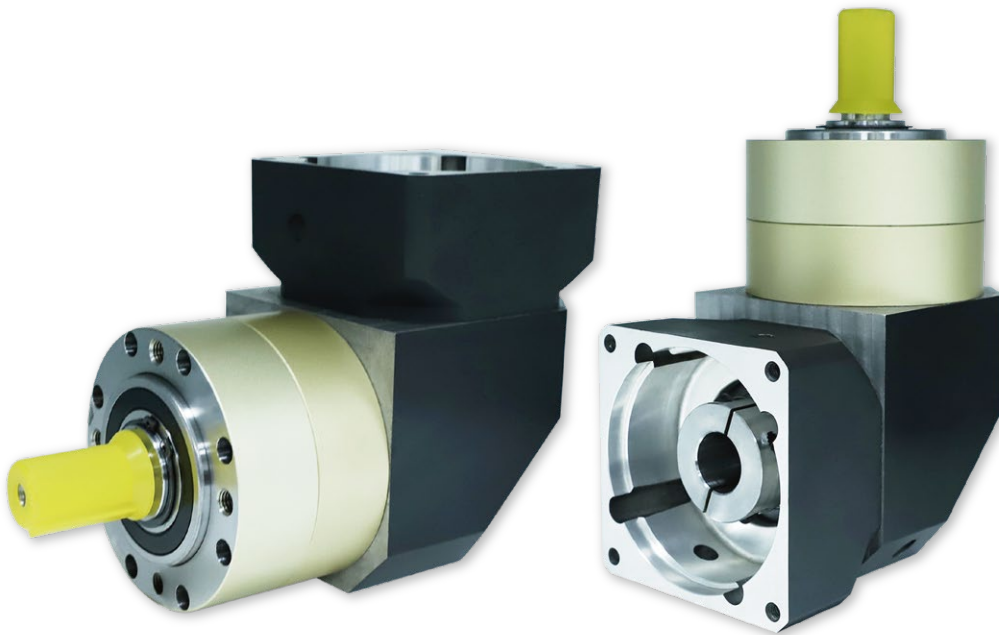


PRODUCT SERIES

HIGH PRECISION PLANETARY REDUCER

ZPLE Spur Gear Series

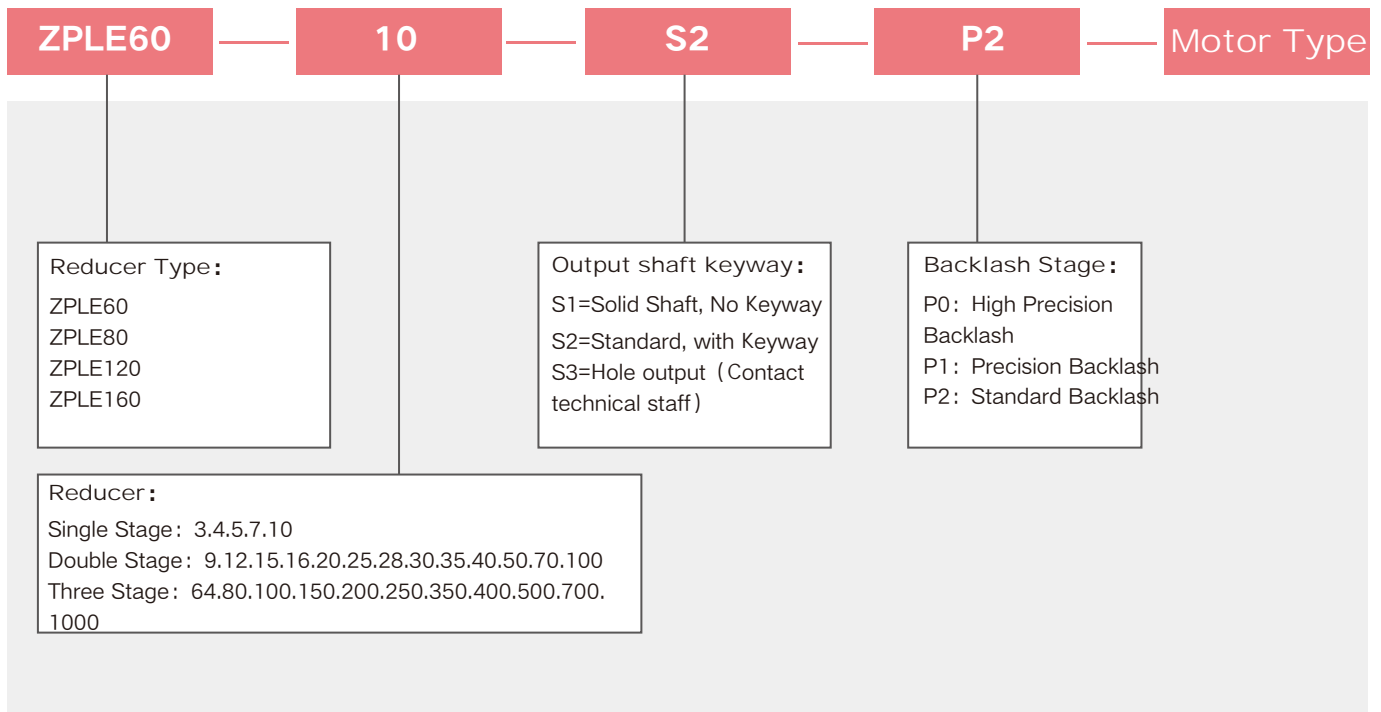


⚙️ ZPLE Spur Gear Series Features

- ⊗ 1. Adopt spur gear transmission, after carburizing and quenching treatment, tooth to tooth wide practice treatment, Surface spraying, stable operation of equipment, low noise.
- ⊗ 2. Simple structure, fast delivery time, mass production.
- ⊗ 3. There are a variety of reducer, which can meet most of the working conditions in the market.

INDICATION OF MODEL NUMBERS

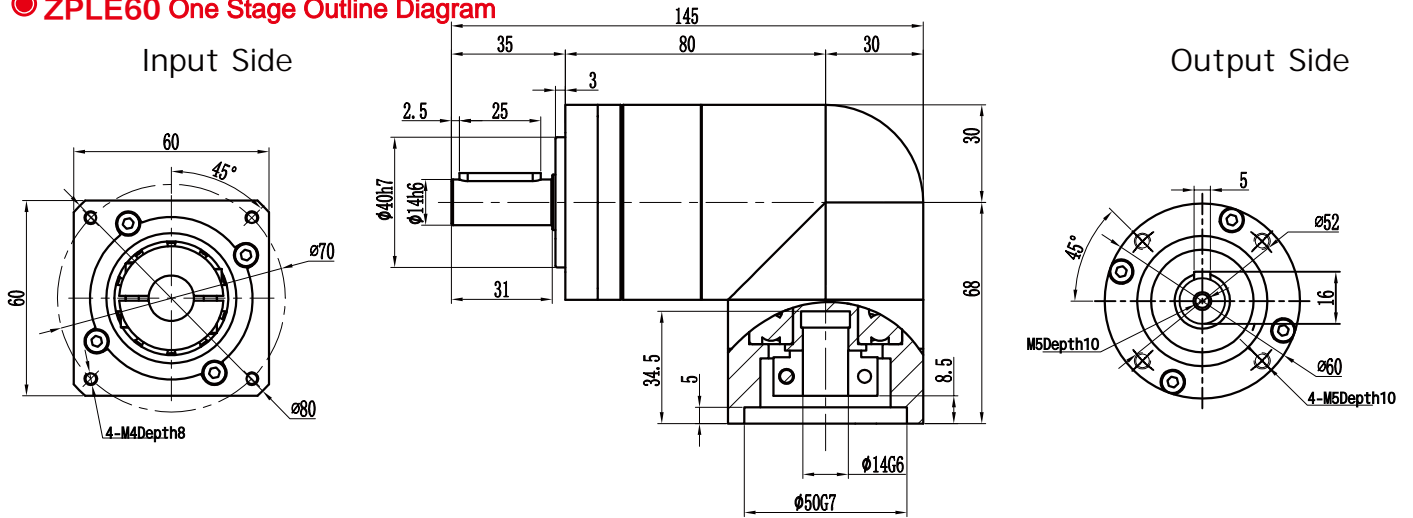
ZPLE SERIES



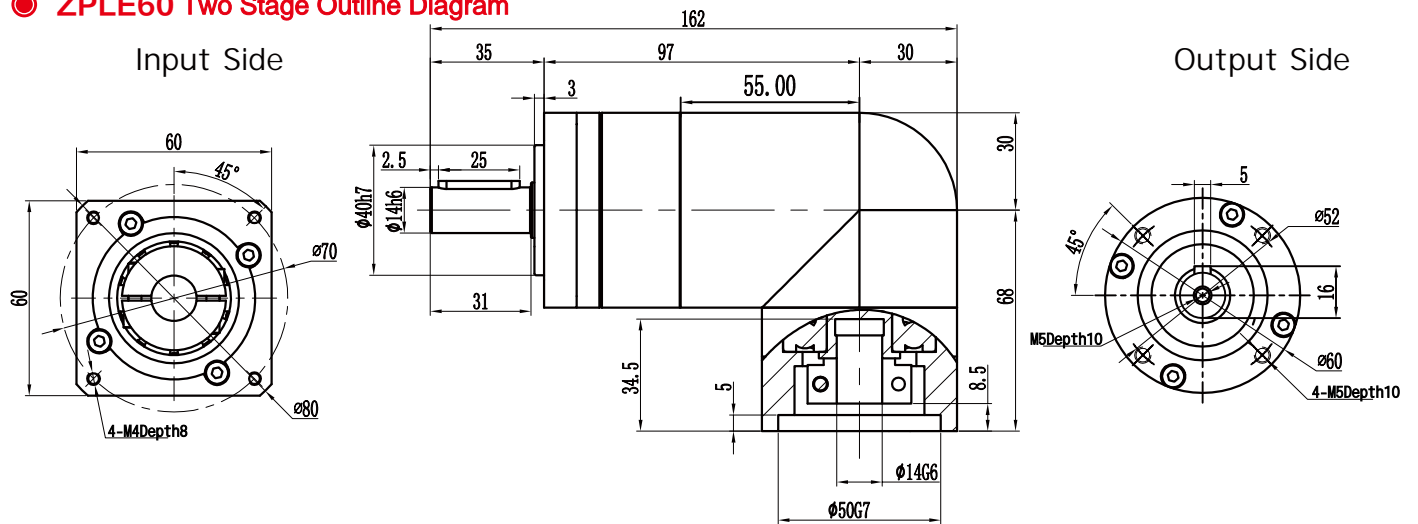
Reducer Rotation Inertia Gauge Table							
Specification	Unit	Stage	Ratio	ZPLE60	ZPLE80	ZPLE120	ZPLE160
Rotational inertia meter	kg/cm ²	1	3	0.064	0.77	2.63	12.14
			4	0.064	0.77	2.63	12.14
			5	0.064	0.77	2.63	12.14
			7	0.064	0.77	2.63	12.14
			8		0.77	2.63	12.14
		10	0.064	0.77	2.63	12.14	
		2	12-40	0.064	0.50	2.63	12.14
			50-100	0.064	0.50	2.63	12.14

ZPLE Series Performance Table							
Specification	Unit	Stage	Ratio	ZPLE60	ZPLE80	ZPLE120	ZPLE160
Rated output torque T_{2N}	Nm	1	4	42	142	280	585
			5	42	142	280	585
			7	33	92	198	378
			10	15	54	95	310
		2	16	42	142	280	585
			20	42	142	280	585
			25	42	142	280	585
			35	42	142	280	585
			40	42	142	280	585
			50	42	142	280	585
			70	33	92	198	378
			100	15	54	95	310
		3	64	42	142	280	585
			80	42	142	280	585
			100	42	142	280	585
			125	42	142	280	585
			140	42	142	280	585
			175	42	142	280	585
			245	42	142	280	585
			350	42	142	280	585
			400	42	142	280	585
500	42		142	280	585		
700	33	92	198	378			
1000	15	54	95	310			
Max torque T_{2NOT}	Nm		1,2,3	Double rated output torque			
Max radial force F_{2aB}	N		1,2,3	680	1750	3100	6550
Max axial force F_{2aB}			1,2,3	340	875	1550	3275
Efficiency	%		1	98			
			2	96			
			3	94			
Weight	kg		1	1.0	3.1	7.4	22
			2	1.5	3.8	9.2	27.7
			3	2.0	5.0	9.8	29

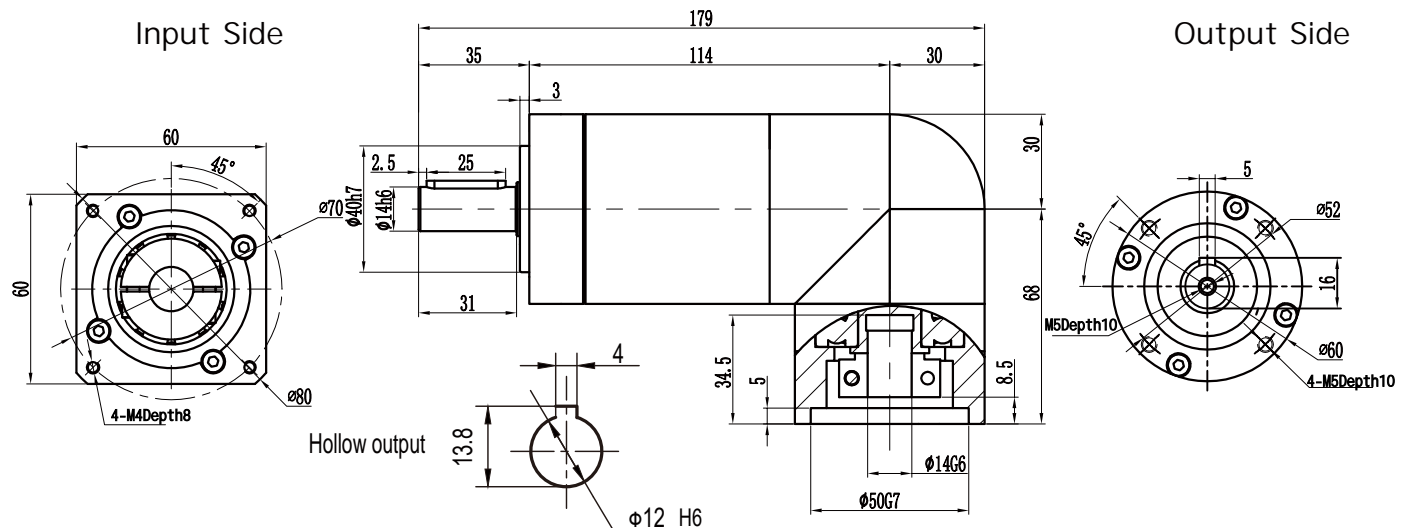
● ZPLE60 One Stage Outline Diagram



● ZPLE60 Two Stage Outline Diagram



● ZPLE60 Three Stage Outline Diagram

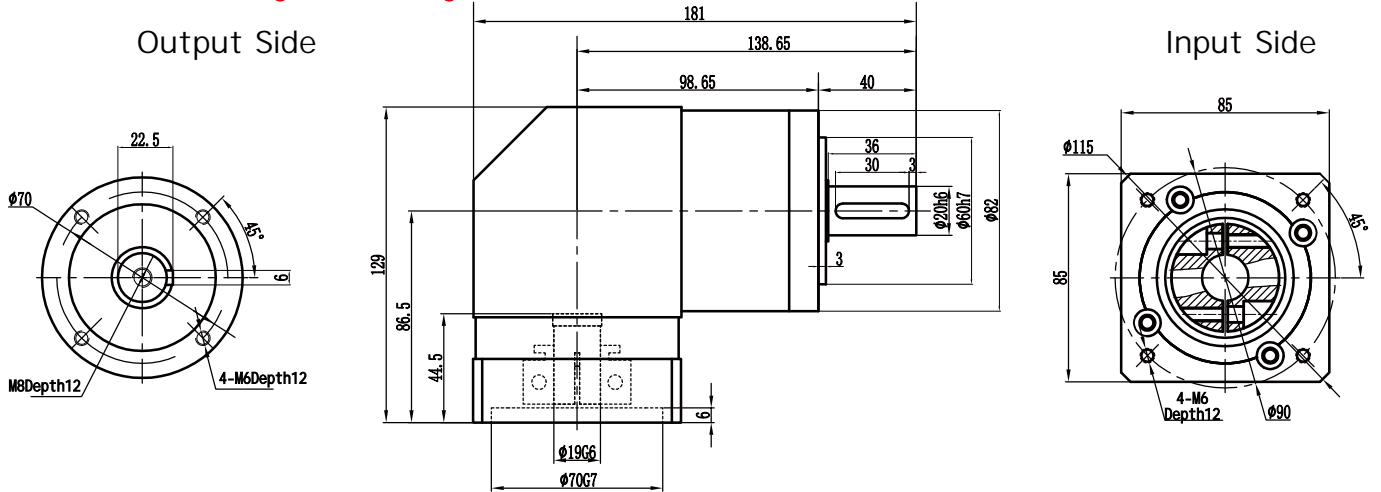


Note: The above drawings are for reference only, the specific is subject to the motor diagram, and the output can be in hollow form and can be customized non-standard.

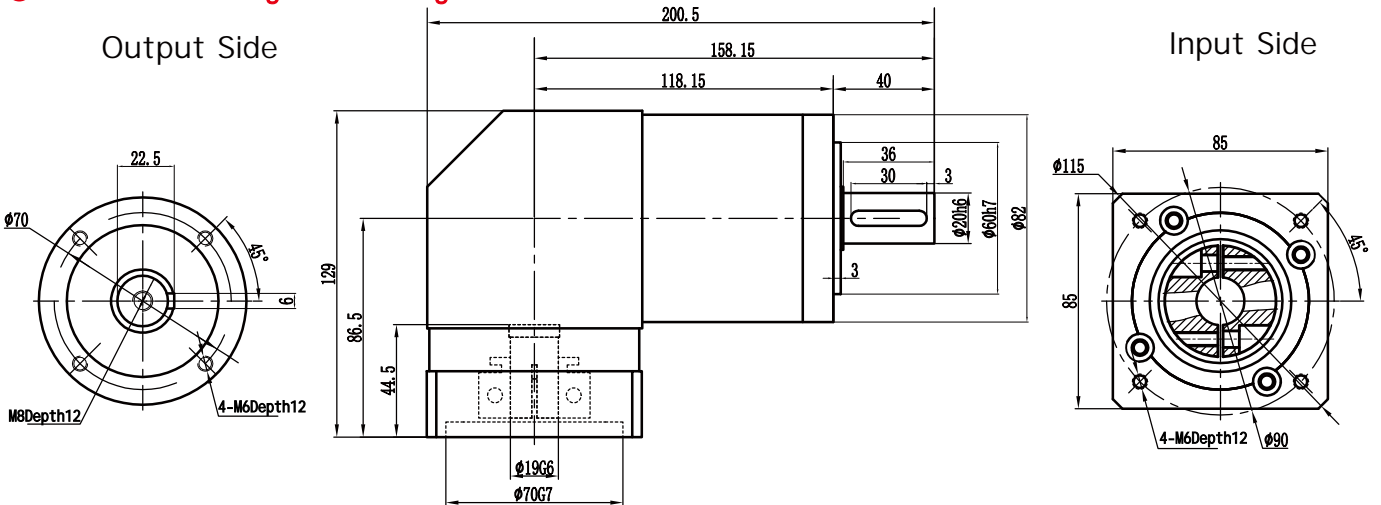
ZPLE80 Outline Diagram

19-70-90-M6接口

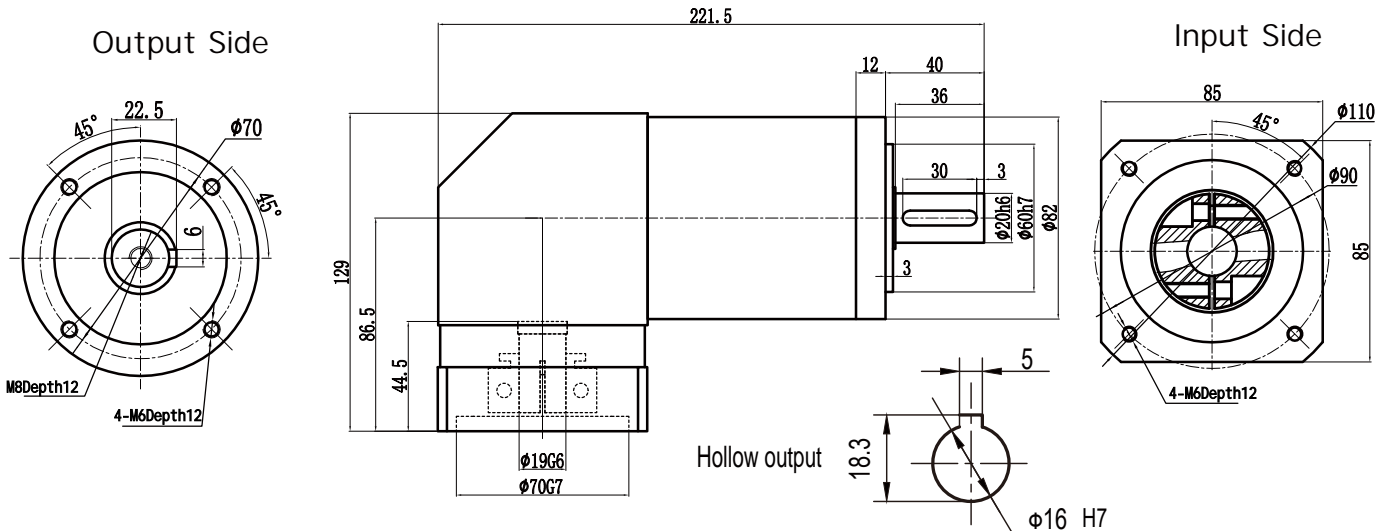
ZPLE80 One Stage Outline Diagram



ZPLE80 Two Stage Outline Diagram

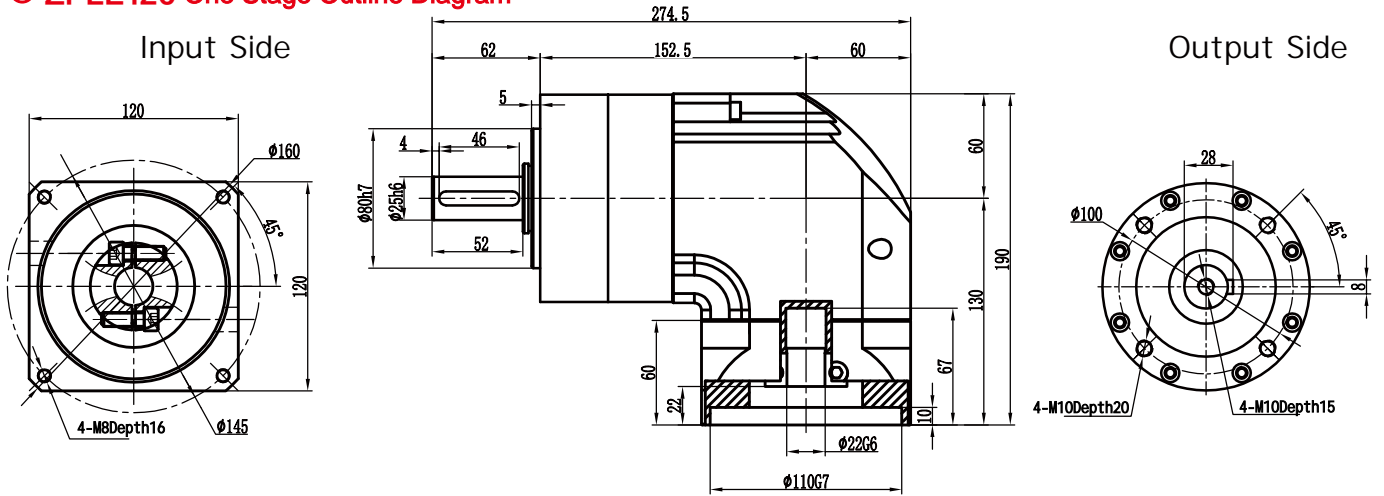


ZPLE80 Three Stage Outline Diagram

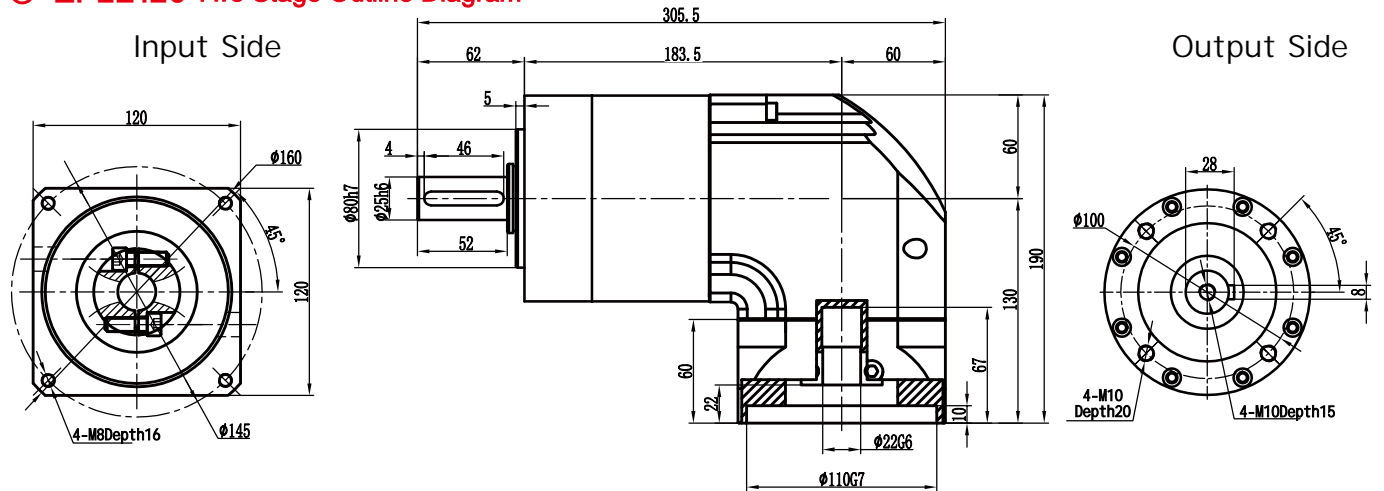


Note: The above drawings are for reference only, the specific is subject to the motor diagram, and the output can be in hollow form and can be customized non-standard.

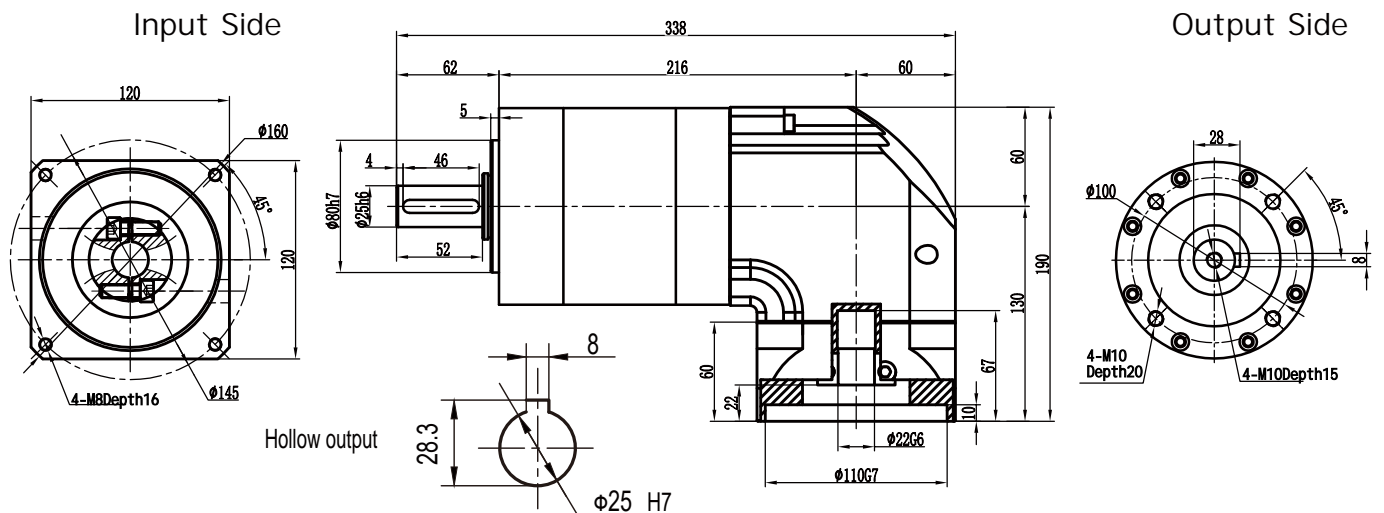
☉ ZPLE120 One Stage Outline Diagram



☉ ZPLE120 Two Stage Outline Diagram



☉ ZPLE120 Three Stage Outline Diagram

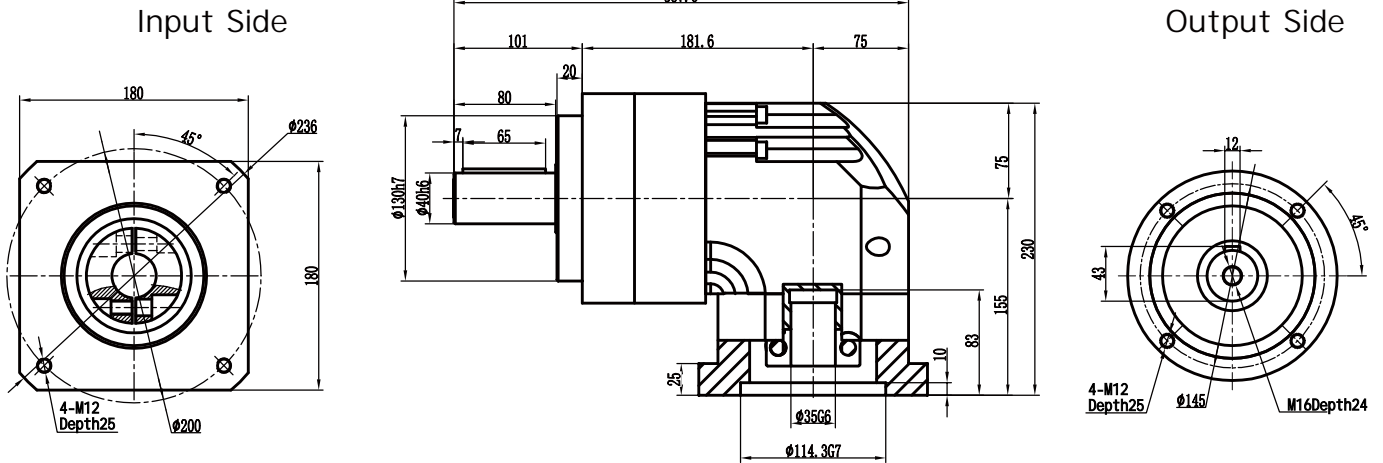


Note: The above drawings are for reference only, the specific is subject to the motor diagram, and the output can be in hollow form and can be customized non-standard.

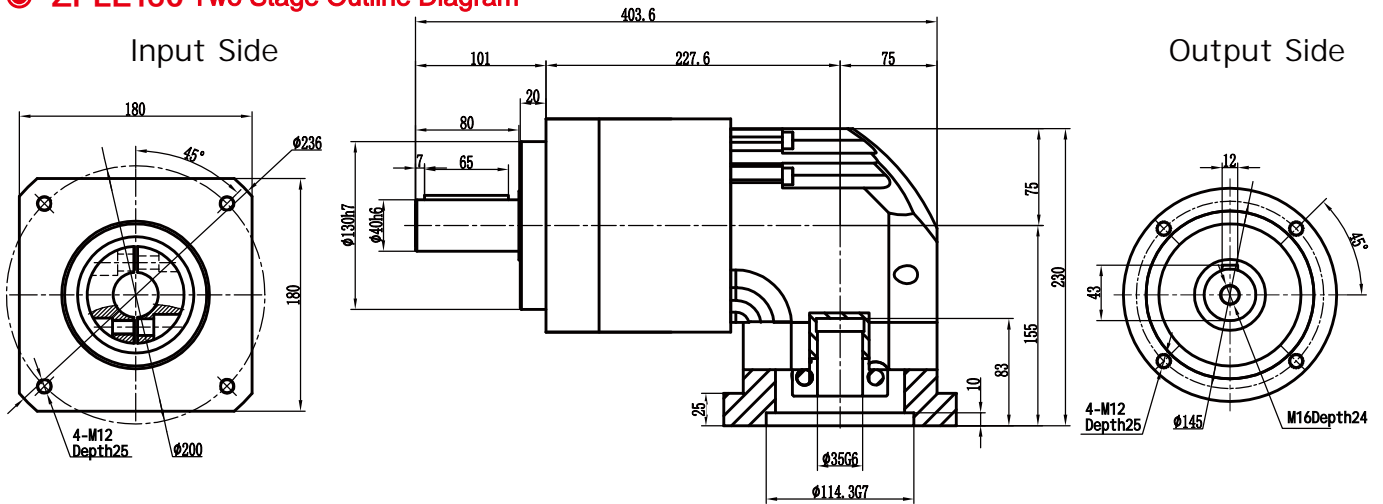
ZPLE160 Outline Diagram

35-114.3-200-M12接口

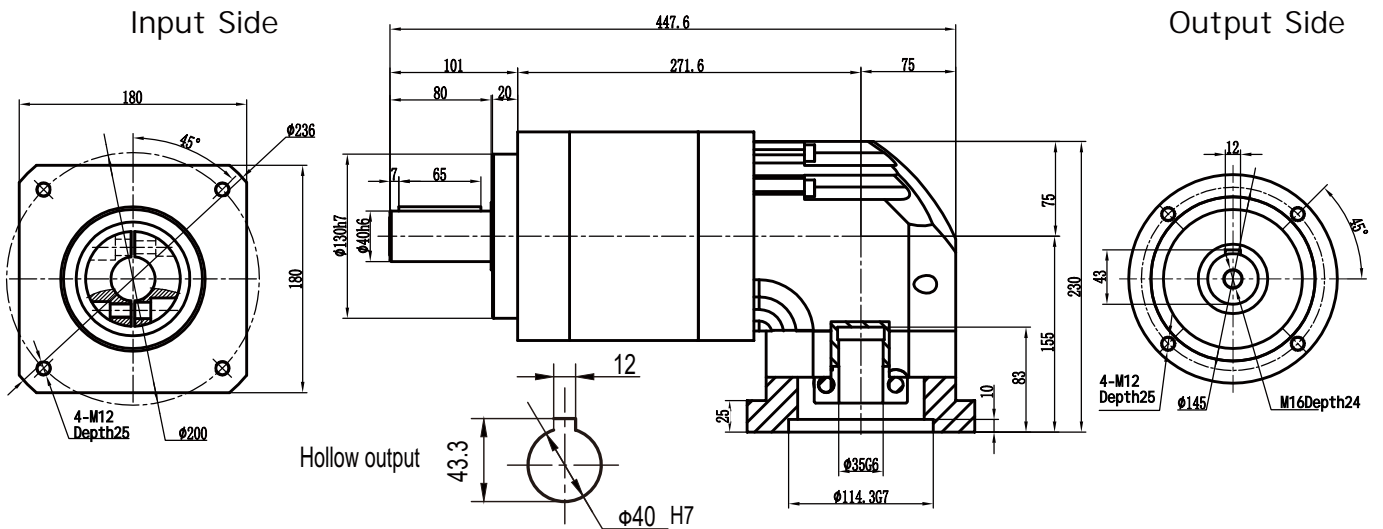
ZPLE160 One Stage Outline Diagram



ZPLE160 Two Stage Outline Diagram



ZPLE160 Three Stage Outline Diagram



Note: The above drawings are for reference only, the specific is subject to the motor diagram, and the output can be in hollow form and can be customized non-standard.