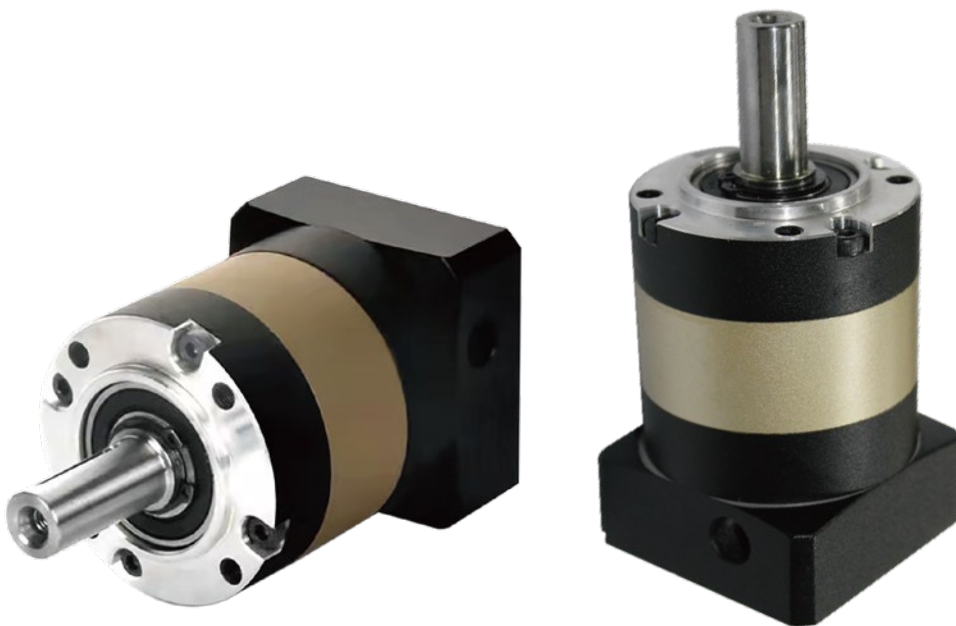


PRODUCT SERIES

HIGH PRECISION PLANETARY REDUCER

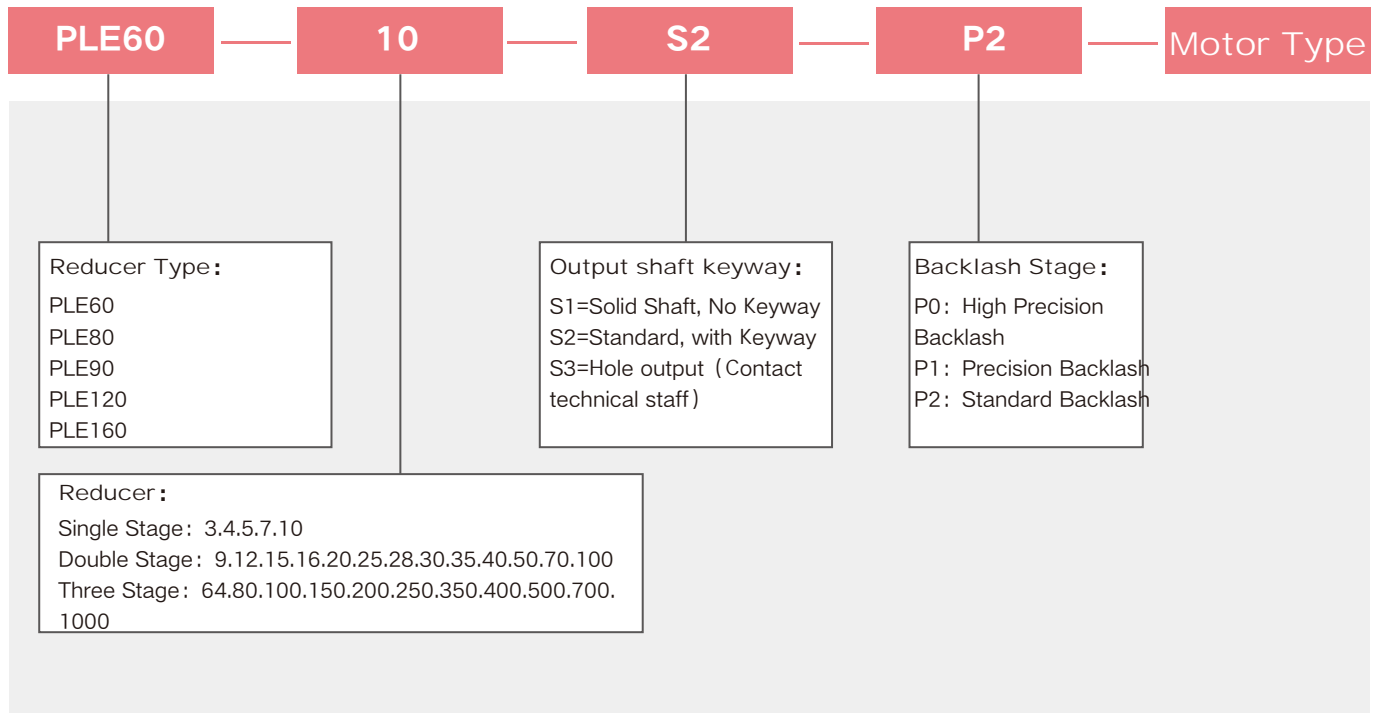
PLE Spur Gear Series



⚙️ PLE Series Features

- ⊗ 1. Adopt spur gear transmission, after carburizing and quenching treatment, tooth to tooth wide practice treatment, Surface spraying, stable operation of equipment, low noise.
- ⊗ 2. Simple structure, fast delivery time, mass production.
- ⊗ 3. There are a variety of reducer, which can meet most of the working conditions in the market.

INDICATION OF MODEL NUMBERS PLE SERIES



Reducer Rotation Inertia Gauge Table

Specification	Unit	Stage	Ratio	PLE60	PLE80	PLE120	PLE160
Rotational inertia meter	kg/cm ²	1	3	0.62	3.38	11.74	33.74
			4	0.62	3.21	11.22	31.95
			5	0.61	3.25	11.11	31.95
			6				
			7	0.61	3.25	11.03	31.1
			8		3.25	11.03	
			10	0.61	3.16	11.03	31.1
		2	12-40	0.61	3.16	11.03	31.1
			50-100	0.61	3.16	0.13	31.1

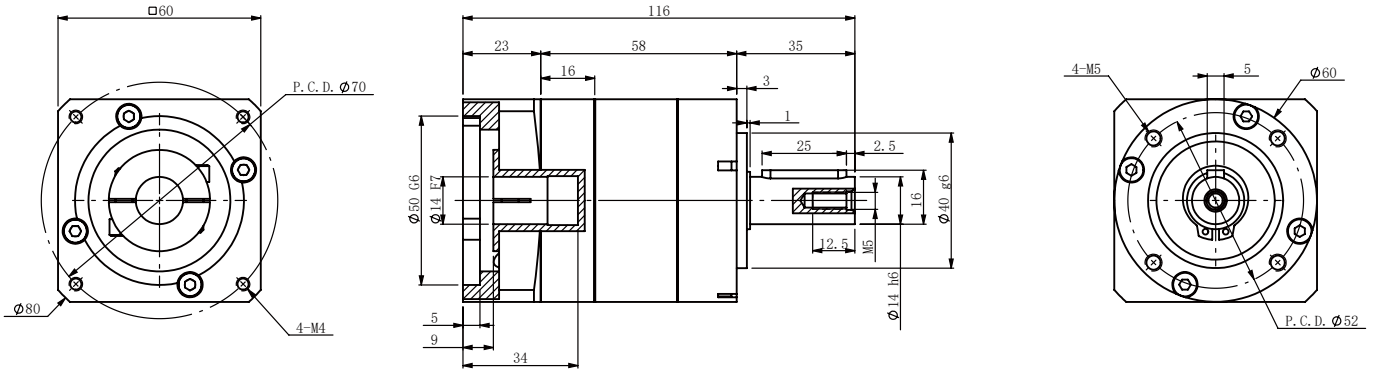
PLE Series Performance Table

Specification	Unit	Stage	Ratio	PLE60	PLE80	PLE90	PLE120	PLE160		
Rated output torque T_{2N}	Nm	1	4	42	142	142	280	585		
			5	42	142	142	280	585		
			7	33	92	92	198	378		
			10	15	54	54	95	310		
		2	16	42	142	142	280	585		
			20	42	142	142	280	585		
			25	42	142	142	280	585		
			35	42	142	142	280	585		
			40	42	142	142	280	585		
			50	42	142	142	280	585		
			70	33	92	92	198	378		
			100	15	54	54	95	310		
		3	64	42	142	142	280	585		
			80	42	142	142	280	585		
			100	42	142	142	280	585		
			125	42	142	142	280	585		
			140	42	142	142	280	585		
			175	42	142	142	280	585		
			245	42	142	142	280	585		
			350	42	142	142	280	585		
			400	42	142	142	280	585		
			500	42	142	142	280	585		
		700	33	92	92	198	378			
		1000	15	54	54	95	310			
		Max torque T_{2NOT}	Nm		1,2,3	Double rated output torque				
		Max radial force F_{2aB}	N		1,2,3	680	1750	1750	3100	6550
		Max axial force F_{2aB}			1,2,3	340	875	875	1550	3275
		Efficiency	%		1	98				
	2			96						
	3			94						
Weight	kg		1	1.0	3.1	3.1	7.4	22		
			2	1.5	3.8	3.8	9.2	27.7		
			3	2.0	5.0	5.0	9.8	29		

PLE60 One Stage Outline Diagram

Input Side

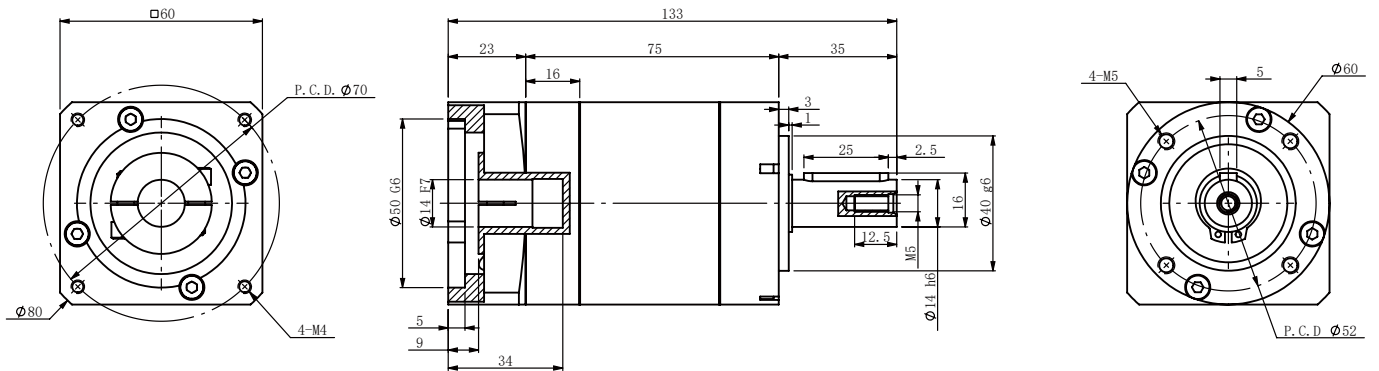
Output Side



PLE60 Two Stage Outline Diagram

Input Side

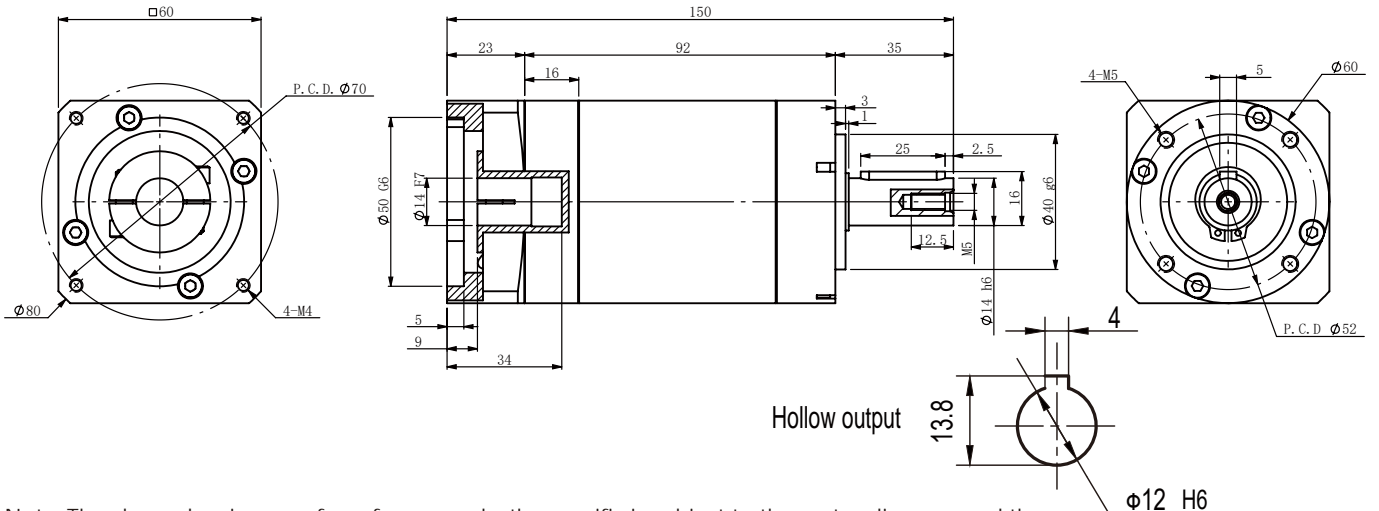
Output Side



PLE60 Three Stage Outline Diagram

Input Side

Output Side

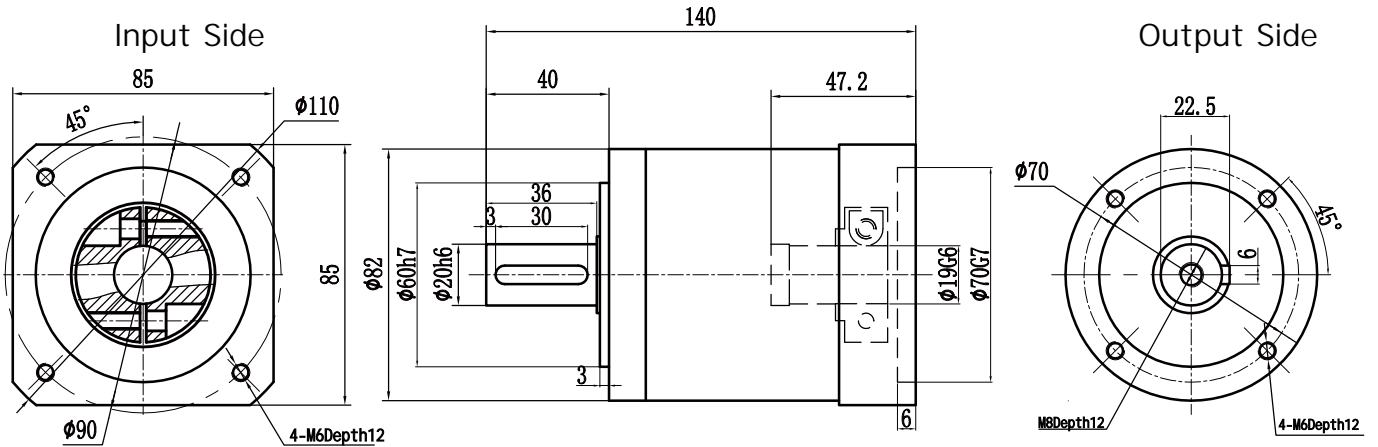


Note: The above drawings are for reference only, the specific is subject to the motor diagram, and the output can be in hollow form and can be customized non-standard.

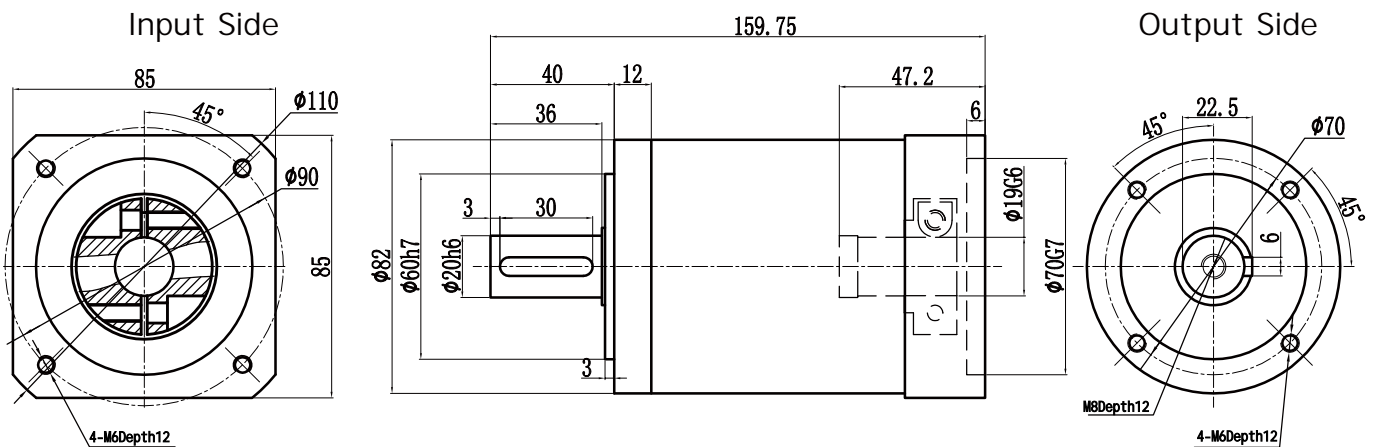
☉ PLE80 Outline Diagram

19-70-90-M6接口

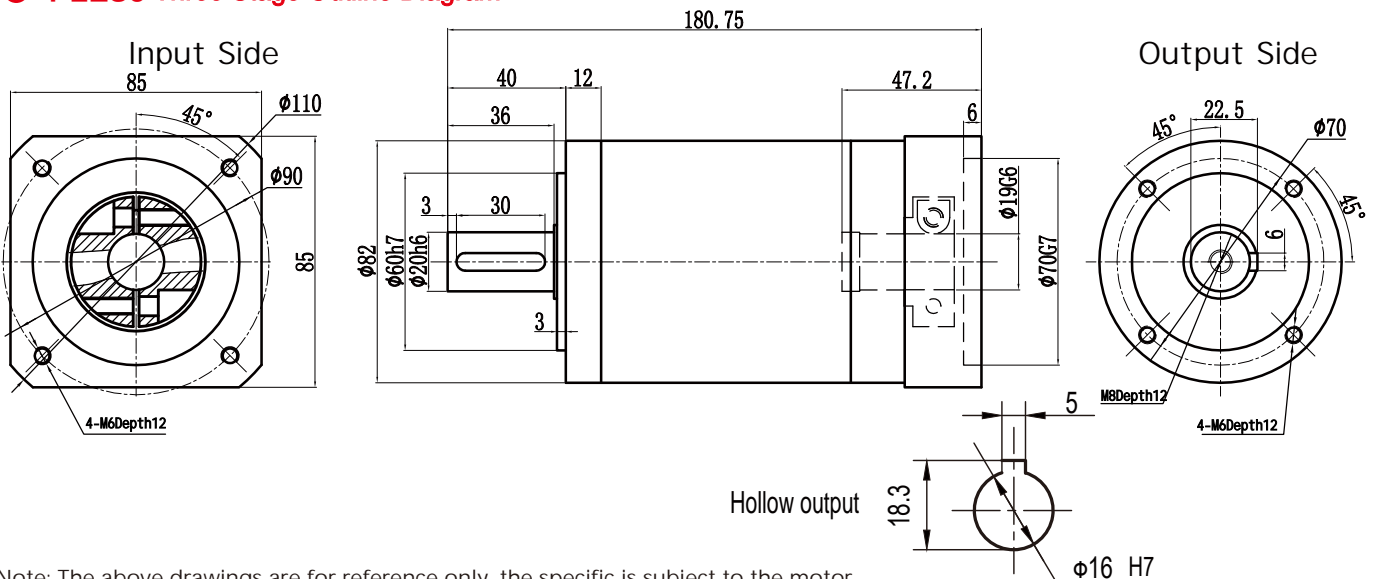
☉ PLE80 One Stage Outline Diagram



☉ PLE80 Two Stage Outline Diagram

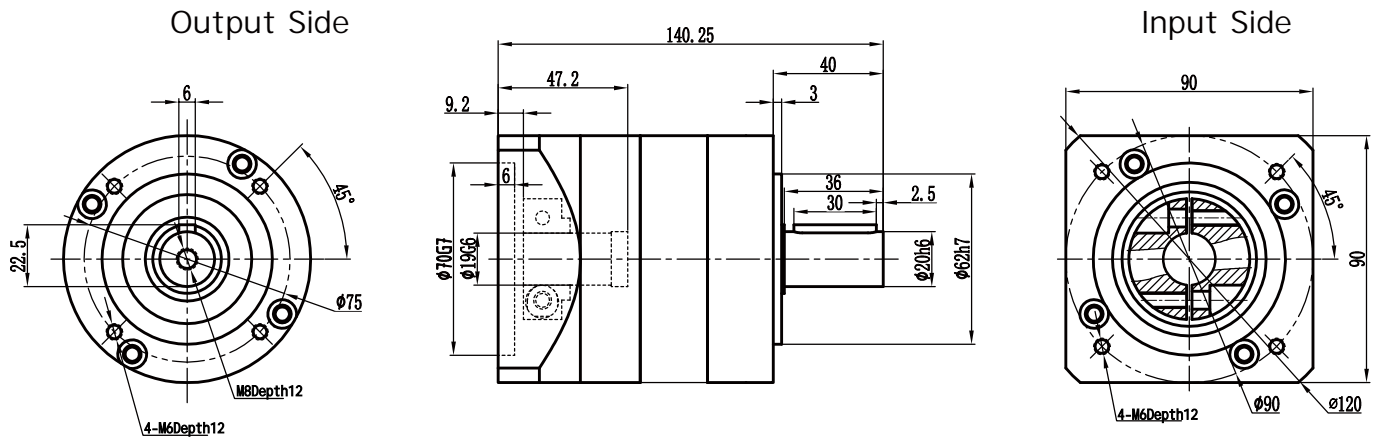


☉ PLE80 Three Stage Outline Diagram

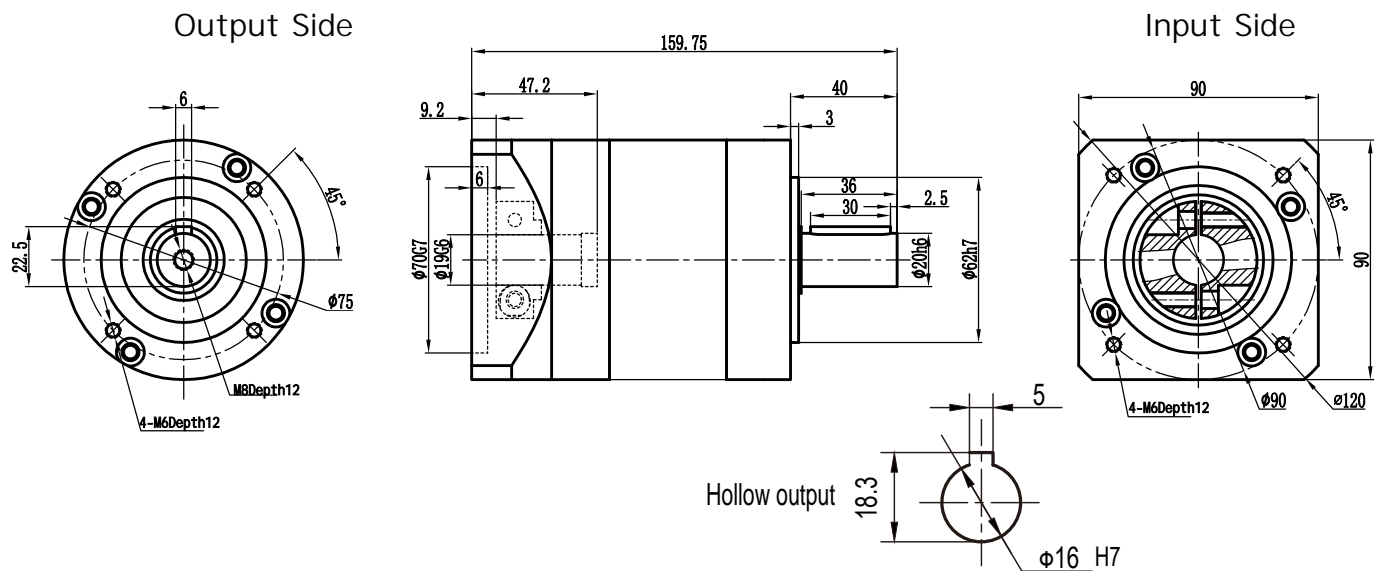


Note: The above drawings are for reference only, the specific is subject to the motor diagram, and the output can be in hollow form and can be customized non-standard.

PLE90 One Stage Outline Diagram



PLE90 Two Stage Outline Diagram

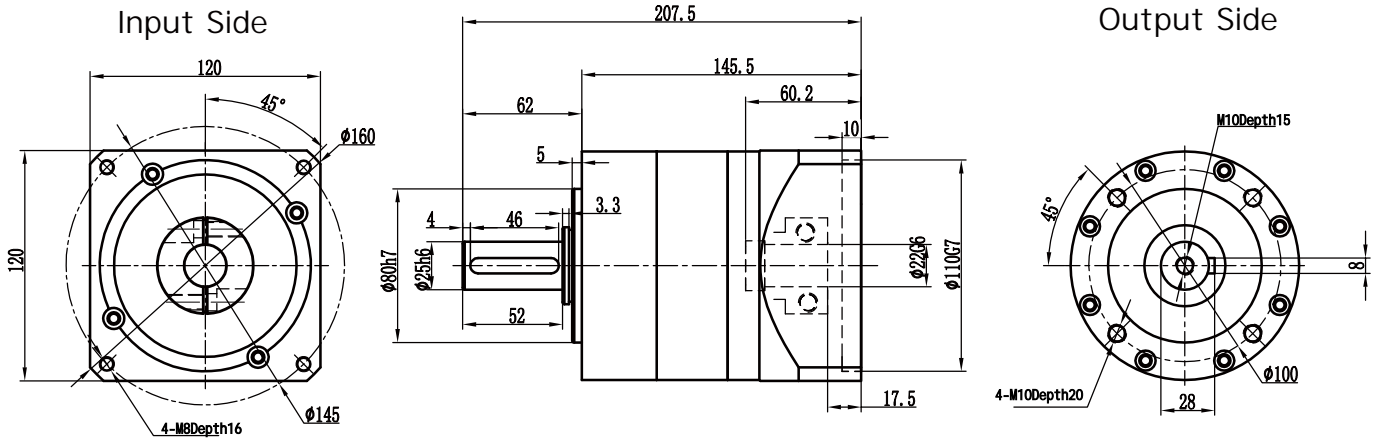


Note: The above drawings are for reference only, the specific is subject to the motor diagram, and the output can be in hollow form and can be customized non-standard.

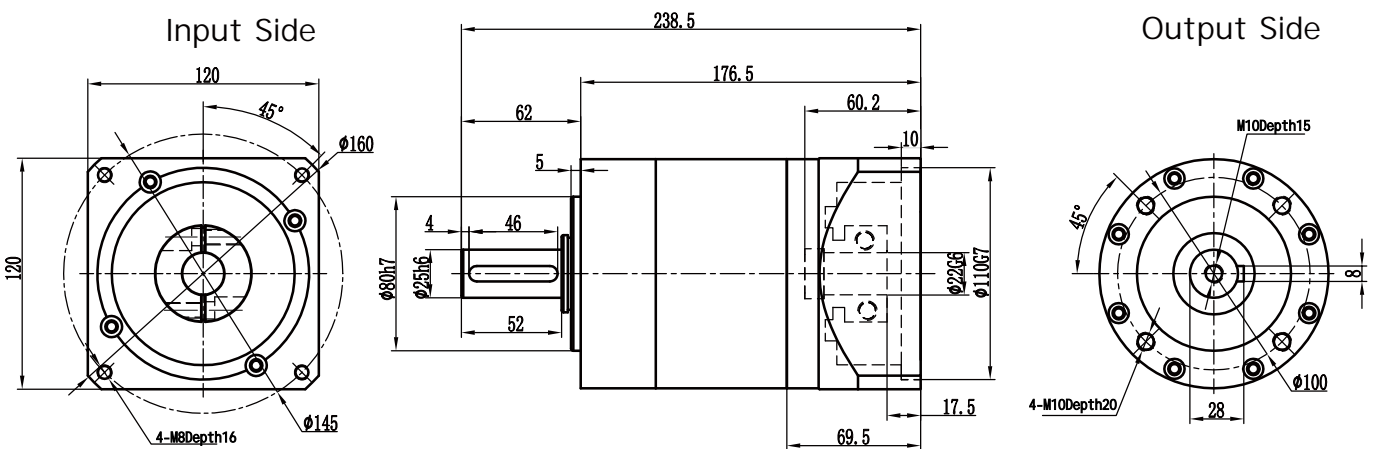
PLE120 Outline Diagram

22-110-145-M8接口

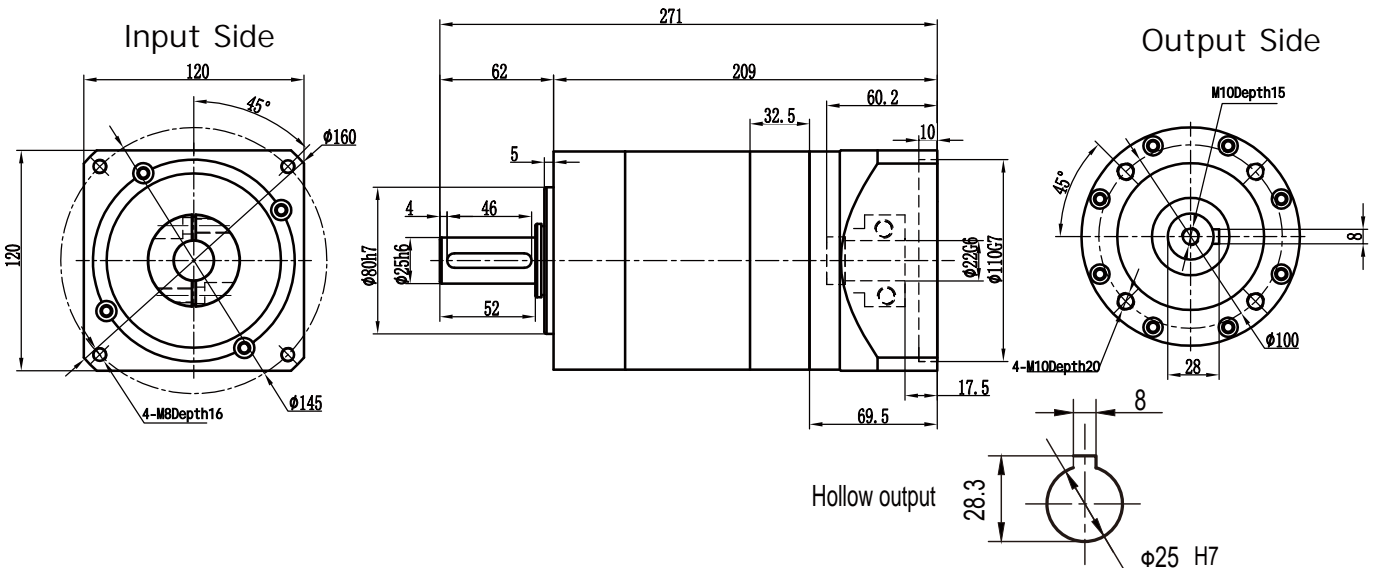
PLE120 One Stage Outline Diagram



PLE120 Two Stage Outline Diagram

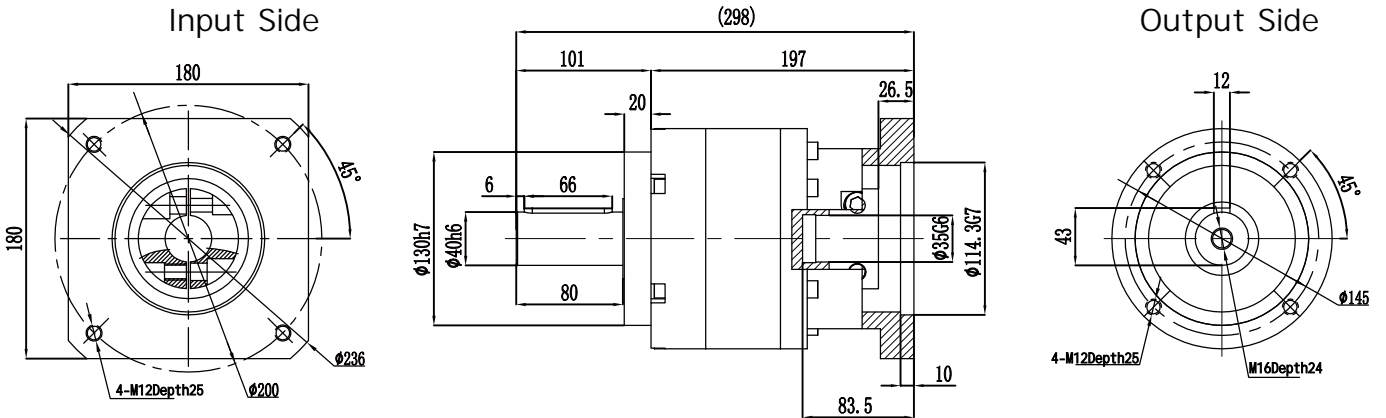


PLE120 Three Stage Outline Diagram

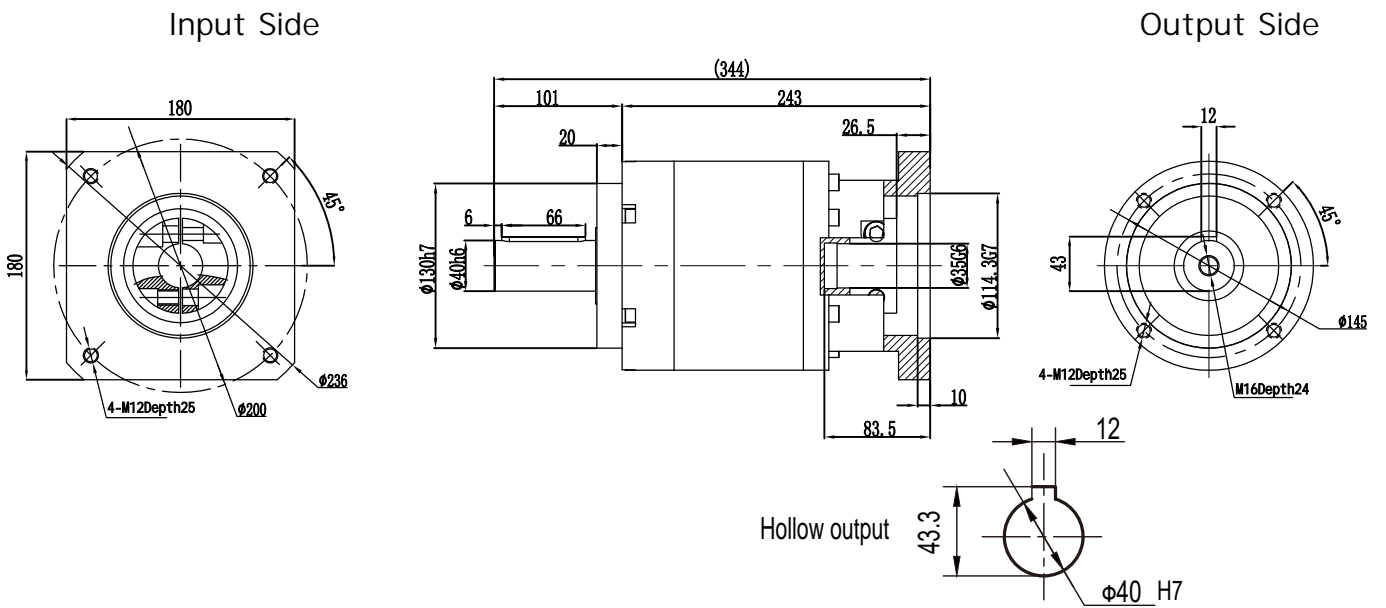


Note: The above drawings are for reference only, the specific is subject to the motor diagram, and the output can be in hollow form and can be customized non-standard.

PLE160 One Stage Outline Diagram



PLE160 Two Stage Outline Diagram



Note: The above drawings are for reference only, the specific is subject to the motor diagram, and the output can be in hollow form and can be customized non-standard.