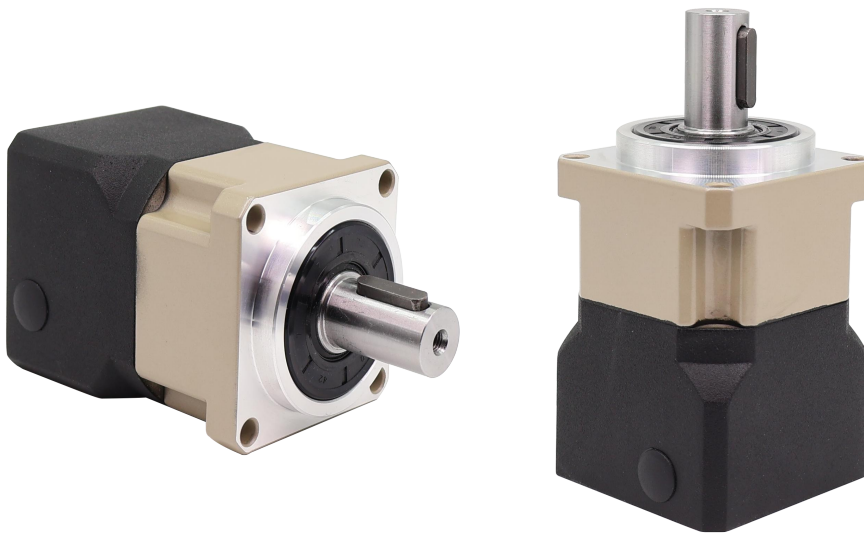


# PRODUCT SERIES

## HIGH PRECISION PLANETARY REDUCER

PGH Helical Gear Series

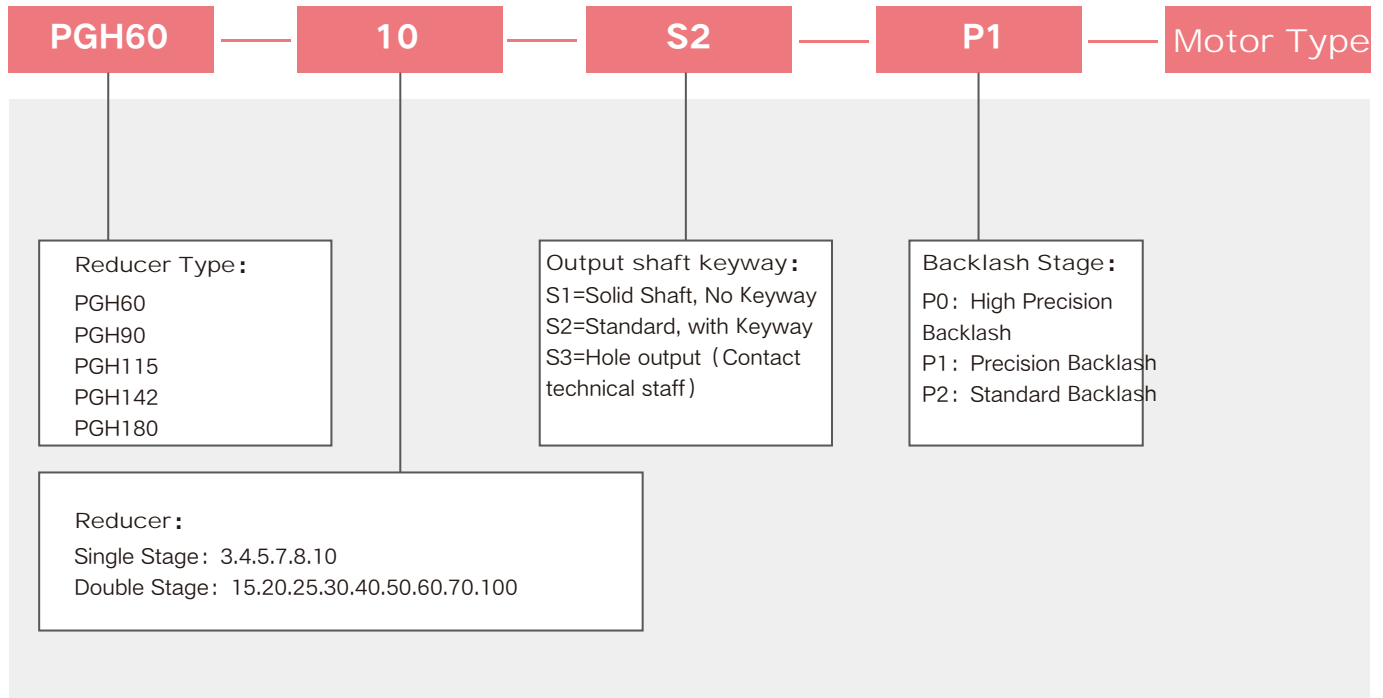


### ⚙️ PGH Helical Gear Series Features

- ⚙️ 1.High precision: back gap less than 5 arc minutes, accurate positioning.
- ⚙️ 2.High rigidity, high torque: Use integral roller bearings to achieve high load capacity.
- ⚙️ 3.High load capacity: The main bearing adopts conical ball bearing to achieve high load capacity.
- ⚙️ 4.Flange and connector: it can be installed on most motors in the world.
- ⚙️ 5.No grease leakage: The use of high viscosity, not easy to separate grease , effectively prevent grease leakage.
- ⚙️ 6.Convenient maintenance: no need to replace grease during the life of the product, more convenient installation.

# INDICATION OF MODEL NUMBERS

## PGH SERIES

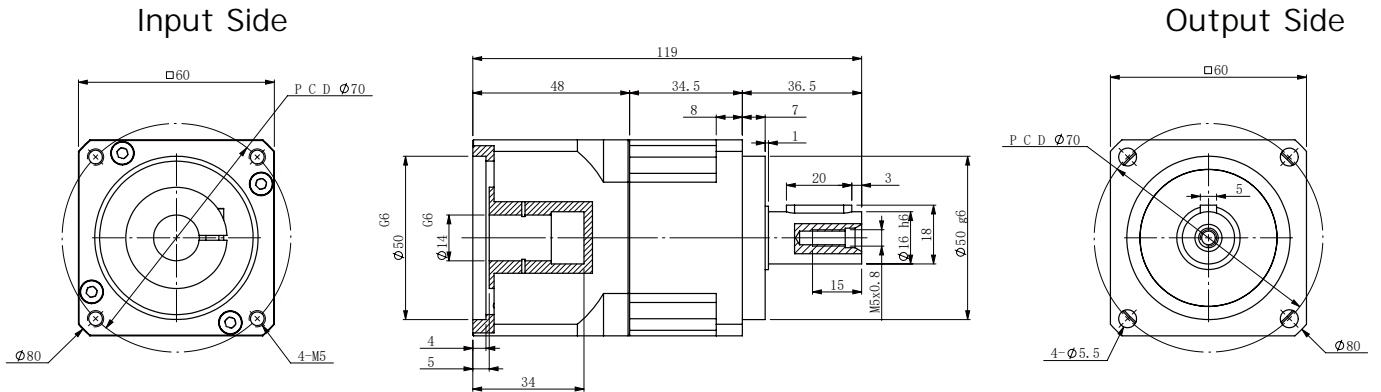


Reducer Rotation Inertia Gauge Table

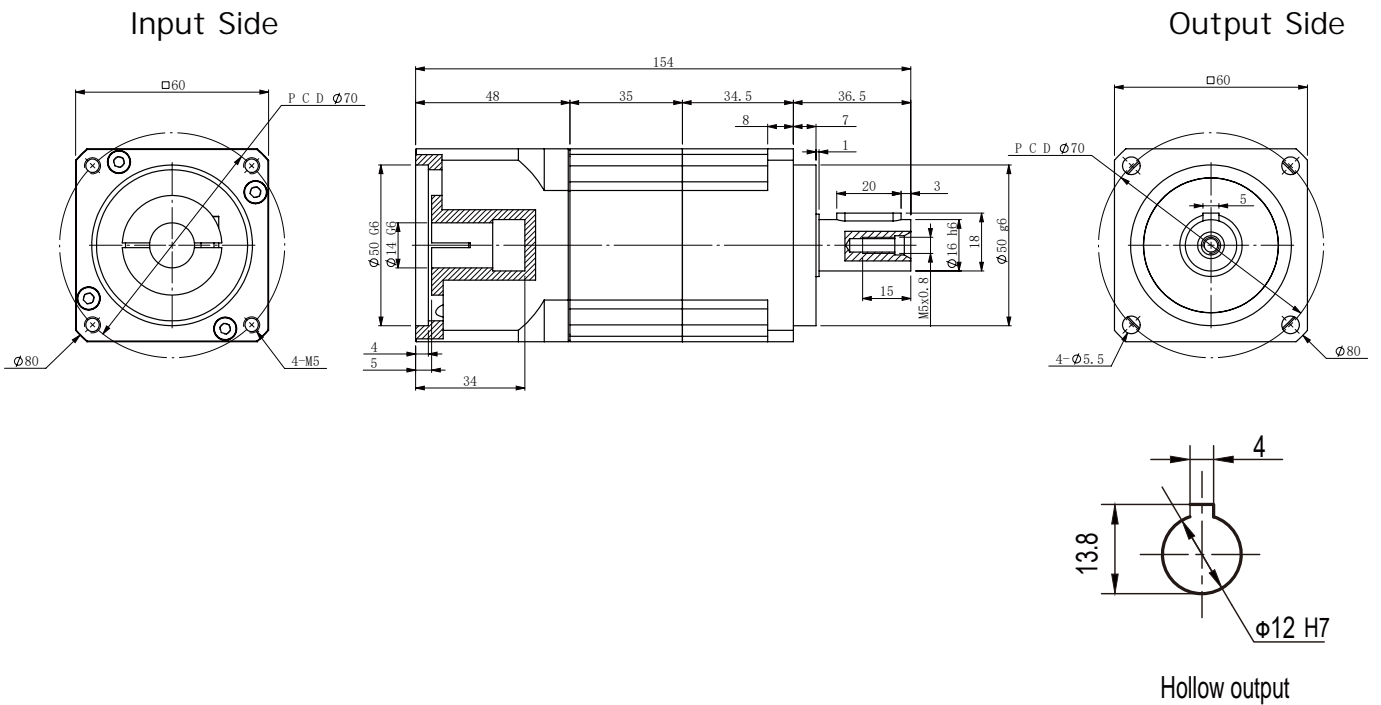
Specification	Unit	Stage	Ratio	PGH60	PGH90	PGH115	PGH142	PGH180
Rotational inertia meter	kg/cm <sup>2</sup>	1	3	0.03	0.16	0.61	9.21	28.98
			4	0.03	0.14	0.48	7.54	23.67
			5	0.03	0.13	0.47	7.42	53.27
			6		0.13	0.45	7.25	
			7	0.03	0.13	0.45	7.14	50.97
			8		0.13	0.44	7.07	
		10	0.03	0.13	0.44	7.04	70.33	
		2	15-40	0.03	0.03	0.13	2.71	7.42
			50-100	0.03	0.03	0.13	2.57	7.03

PGH Series Performance Table								
Specification	Unit	Stage	Ratio	PGH60	PGH90	PGH115	PGH142	PGH180
Rated output torque $T_{2N}$	Nm	1	3	53	145	290	520	950
			4	55	150	300	550	1000
			5	54	140	290	530	1050
			6		135	280	490	
			7	44	125	270	450	960
			8		110	240	390	
		2	10	37	95	220	360	800
			15	53	145	290	520	950
			20	55	150	300	550	1000
			25	54	140	290	530	1050
			30	54	140	290	530	1050
			40	54	140	290	530	1050
			50	54	140	290	530	1050
			60	46	135	280	490	1000
			70	44	125	270	450	960
			100	37	95	220	360	800
Max torque $T_{2NOT}$	Nm		Double rated output torque					
Max radial force $F_{2aB}$	N	1,2		1010	1780	3420	5380	8330
Max axial force $F_{2aB}$	N	1,2		600	1500	2650	4670	6460
Efficiency	%	1	98					
		2	96					
Weight	kg	1		1.3	3.5	7.8	16.1	27
		2		2	5.6	9.5	19	34

PGH060 One Stage Outline Diagram



PGH060 Two Stage Outline Diagram

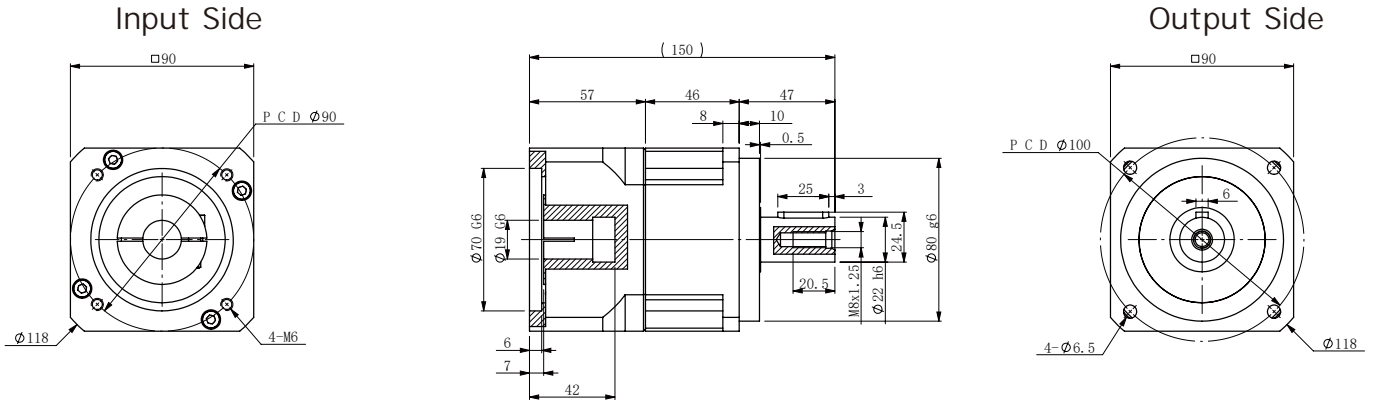


Note: The above drawings are for reference only, the specific is subject to the motor diagram, and the output can be in hollow form and can be customized non-standard.

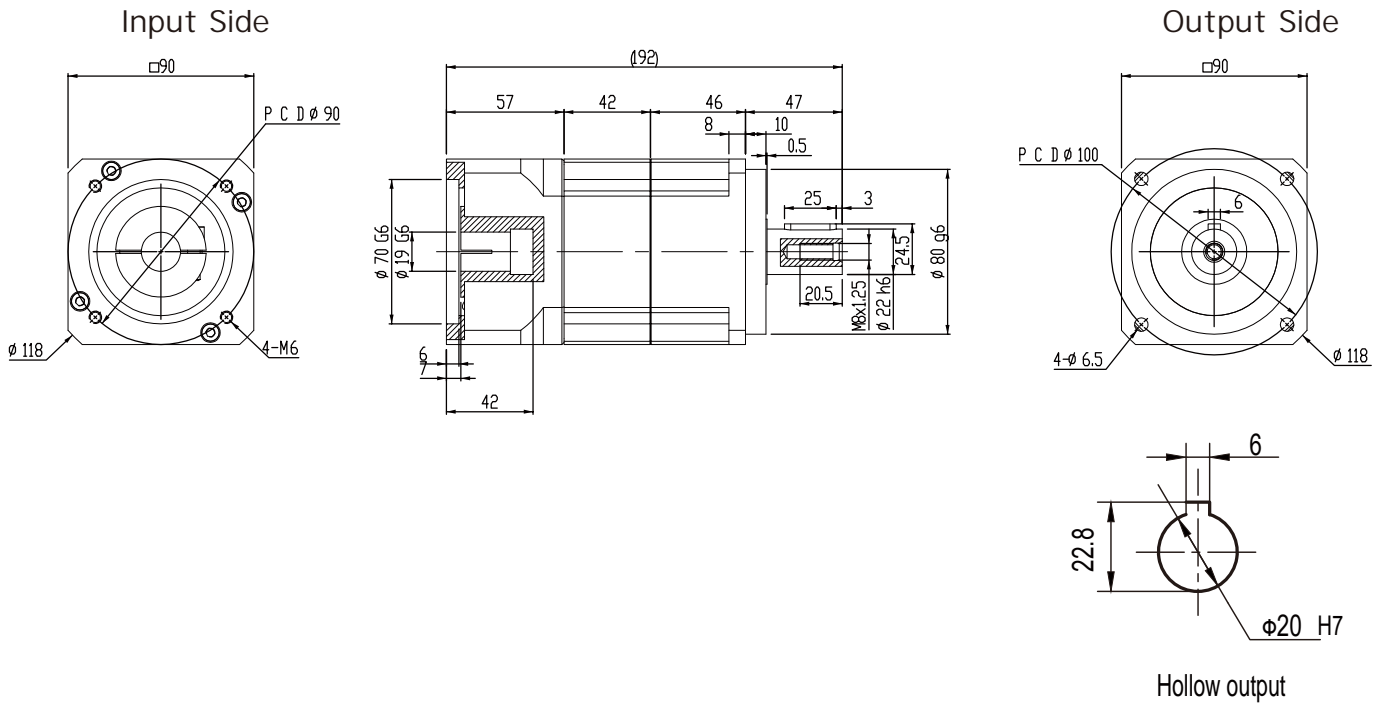
PGH090 Outline Diagram

19-70-90-M6接口

PGH090 One Stage Outline Diagram



PGH090 Two Stage Outline Diagram



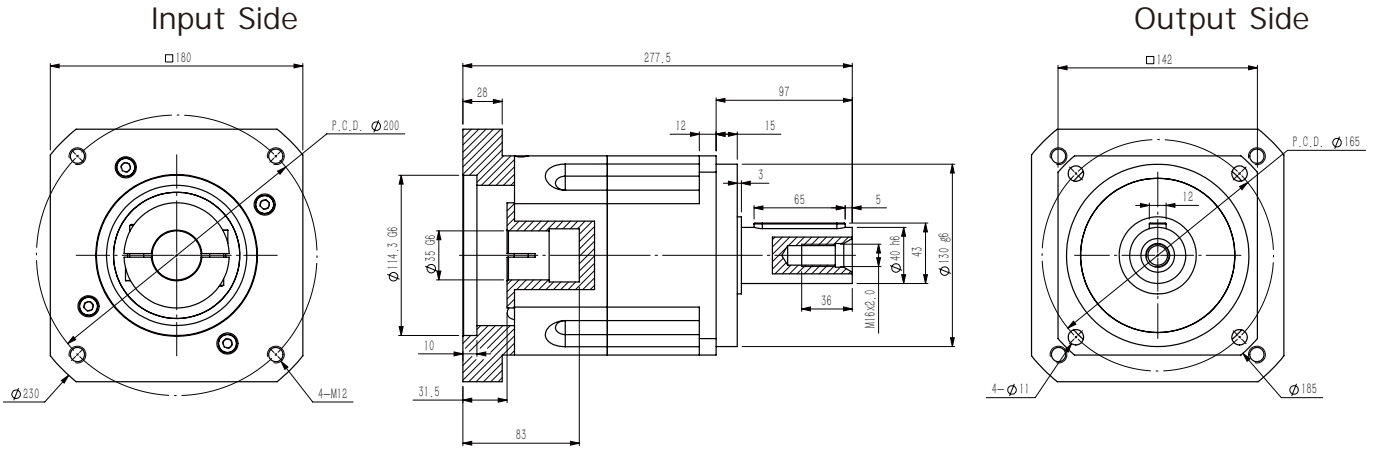
Note: The above drawings are for reference only, the specific is subject to the motor diagram, and the output can be in hollow form and can be customized non-standard.



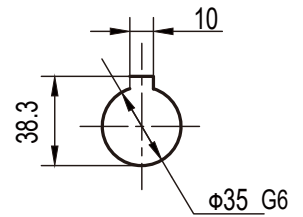
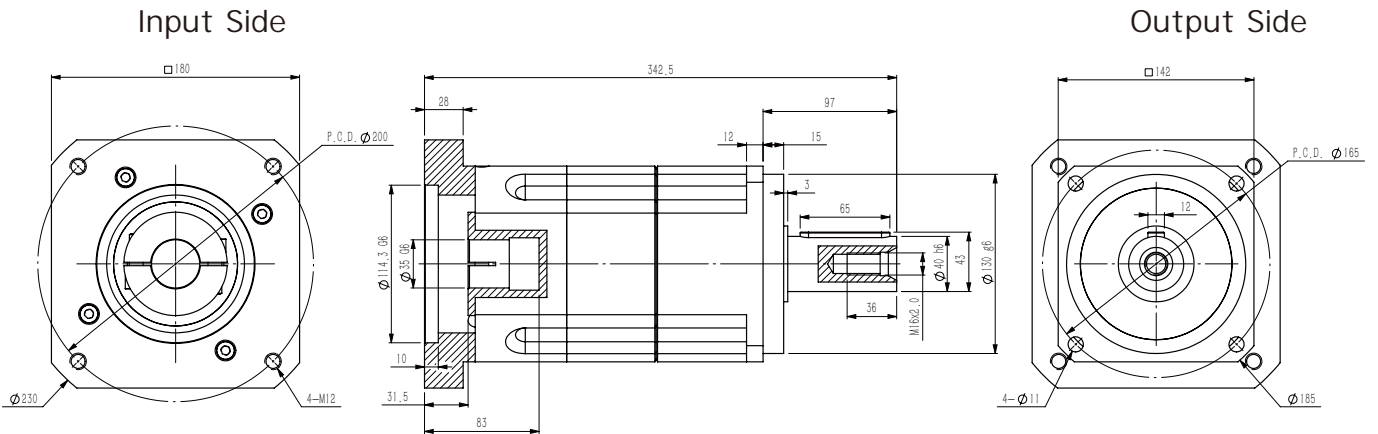
PGH142 Outline Diagram

35-114.3-200-M12接口

PGH142 One Stage Outline Diagram



PGH142 Two Stage Outline Diagram



Hollow output

Note: The above drawings are for reference only, the specific is subject to the motor diagram, and the output can be in hollow form and can be customized non-standard.

